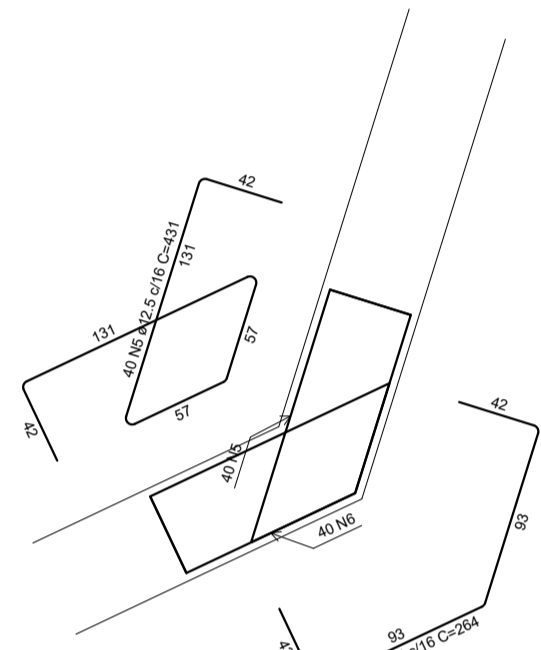
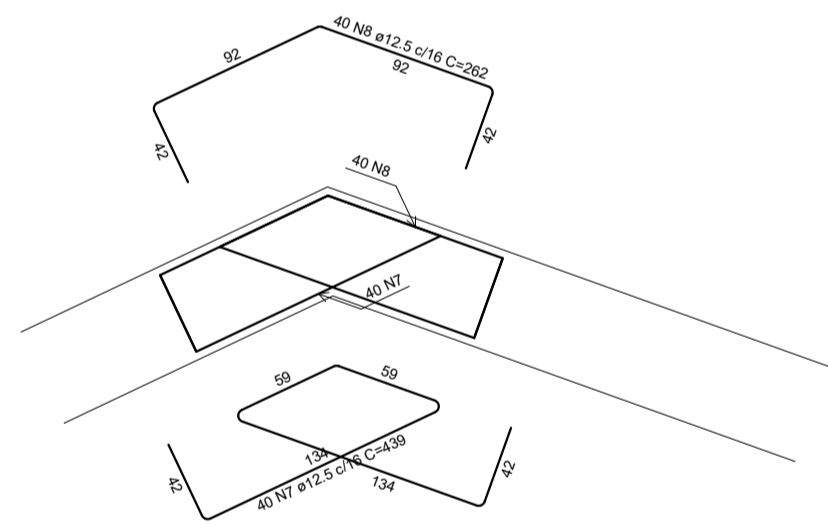


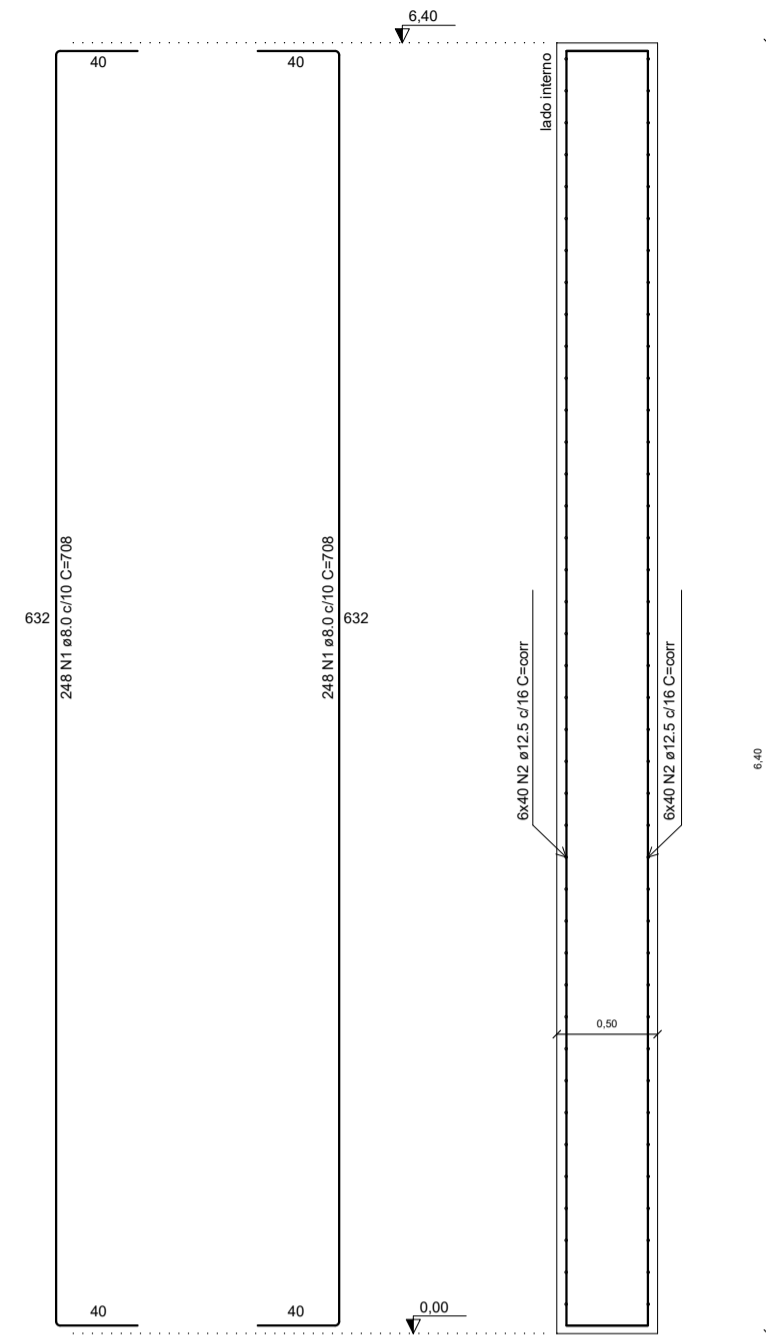
PAR1-PAR3



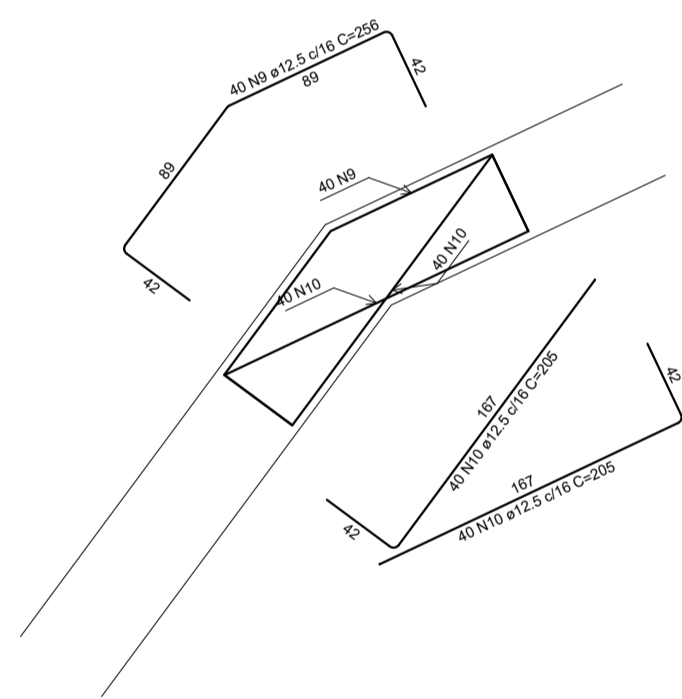
PAR2-PAR3



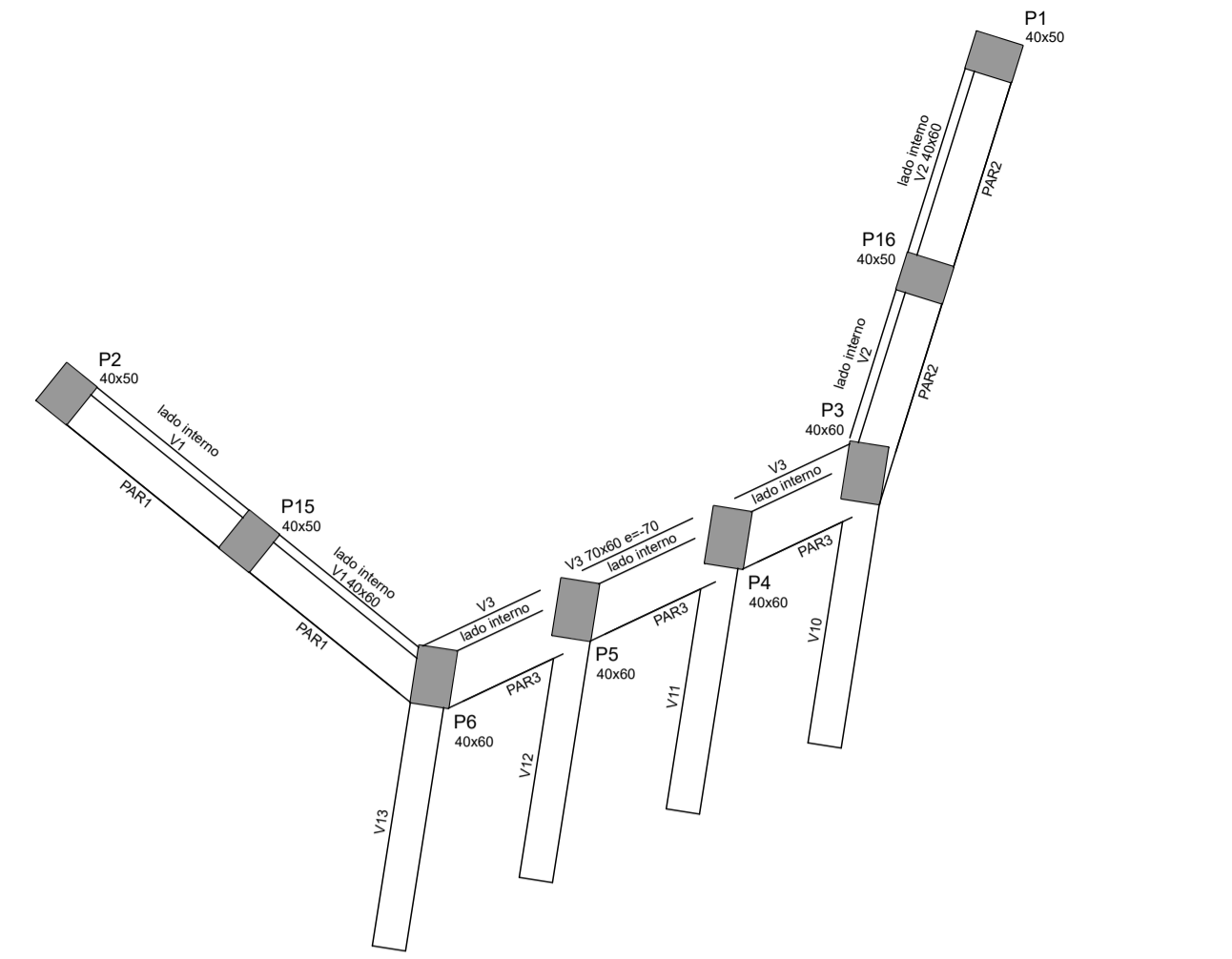
PAR4-PAR5



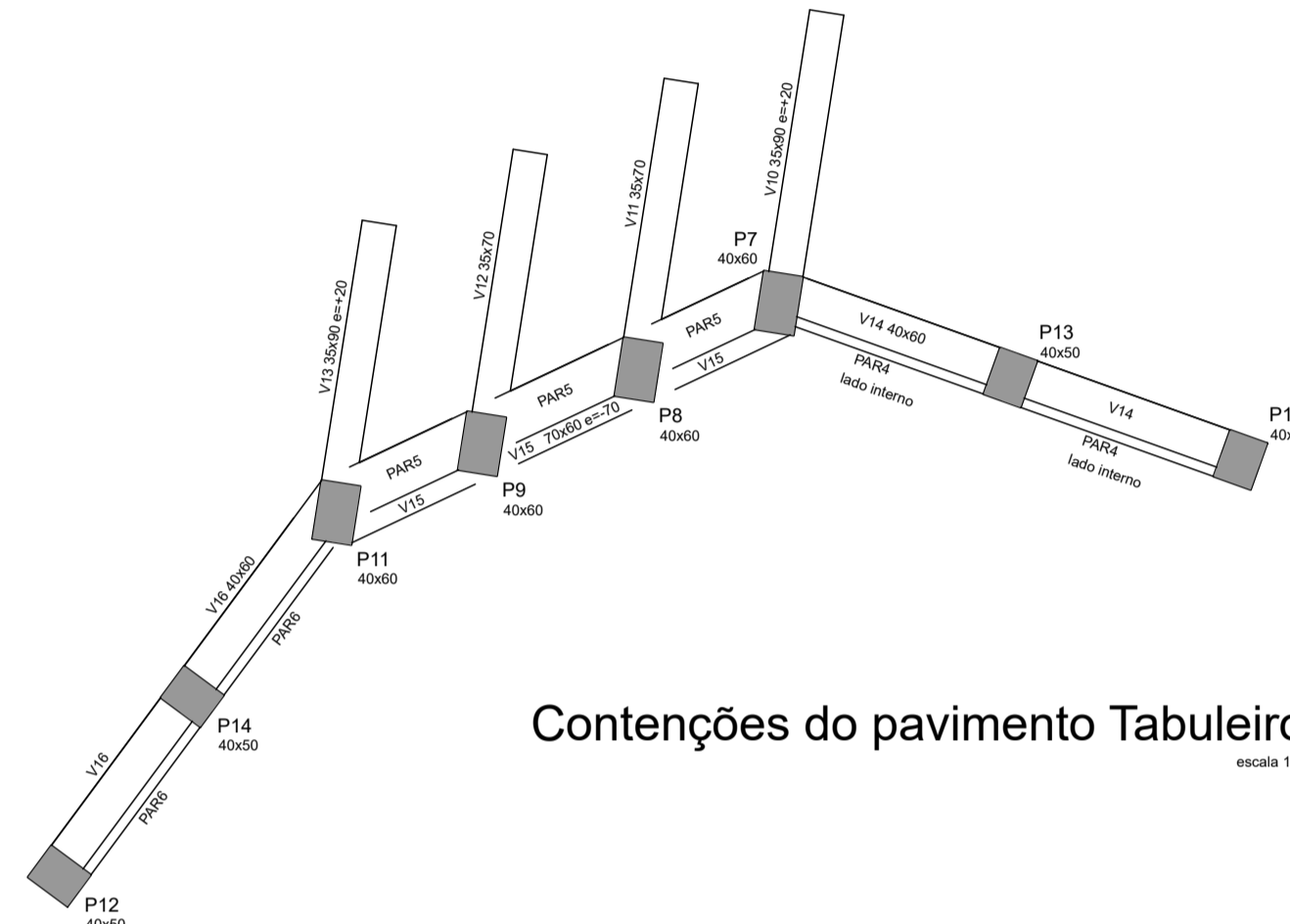
PAR1 = PAR2 = PAR3 = PAR4 = PAR5 = PAR6



PAR5-PAR6



Contenções do pavimento Tabuleiro



Contenções do pavimento Fundação

RELAÇÃO DO AÇO

6xPAR1 PAR4-PAR5		PAR1-PAR3 PAR5-PAR6		PAR2-PAR3	
AÇO	N	DIAM (mm)	QUANT	C.UNIT (cm)	C.TOTAL (cm)
CA50	1	8.0	496	708	351168
	2	12.5	432	corr	233280
	3	12.5	40	392	15680
	4	12.5	40	271	10840
	5	12.5	40	431	17240
	6	12.5	40	264	10560
	7	12.5	40	439	17560
	8	12.5	40	262	10480
	9	12.5	40	256	10240
	10	12.5	80	205	16400

RESUMO DO AÇO

AÇO	DIAM (mm)	C.TOTAL (m)	PESO (kg)
CA50	8.0	3511.7	1387.11
	12.5	3422.8	3296.16
PESO TOTAL (kg)			
CA50	4683.27		

Volume de concreto (C-30) = 80.26 m³
 Área de forma = 335.16 m²



PREFEITURA MUNICIPAL DE
 ANTA GORDA / RS
 Projeto Básico para construção da ponte
 na Rua Dr. Godoy, sobre Arroio Zeferino

Francisco David Frighetto
 Prefeito Municipal

Altos Engenharia e Projetos LTDA
 CNPJ: 42.970.303/0001-87

Des: Luiz Domebbo	ÁREA:	PROJETO:	FRANCHA:
	42,32m²	Planta de armaduras de paredes de contenção.	
DATA:	LOCALIZAÇÃO:	03/04	
09/2024	Rua Dr. Godoy, centro, Anta Gorda/RS		