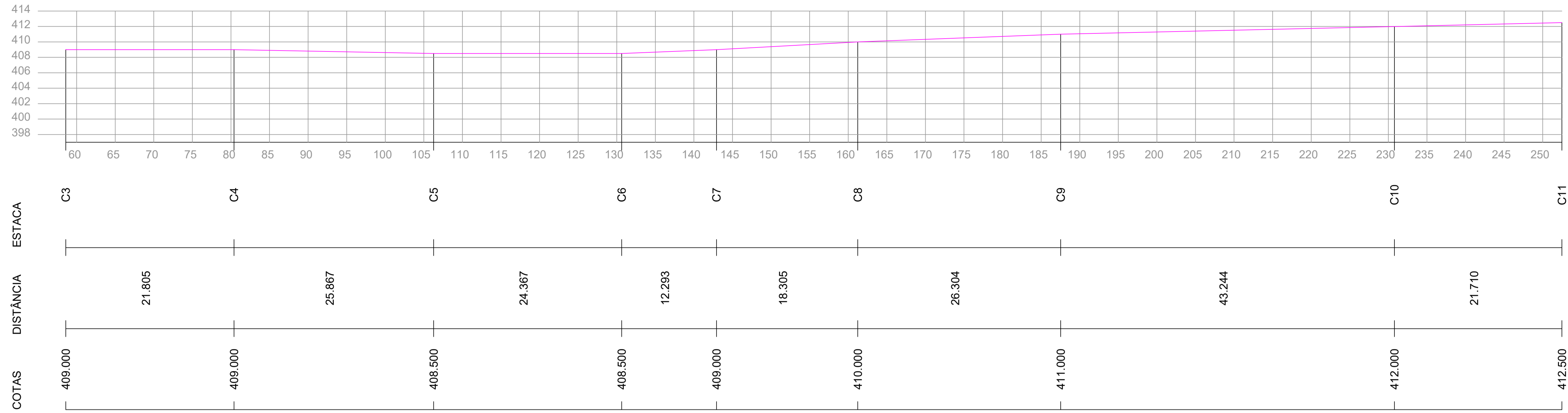
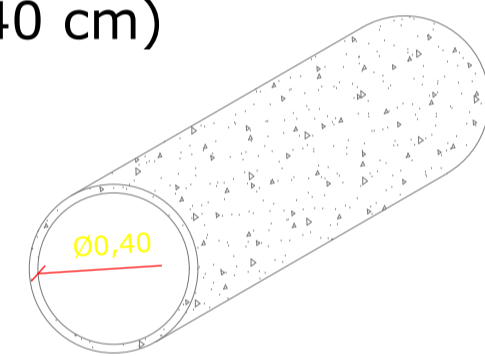


# PERFIL RUA BARÃO DO RIO BRANCO

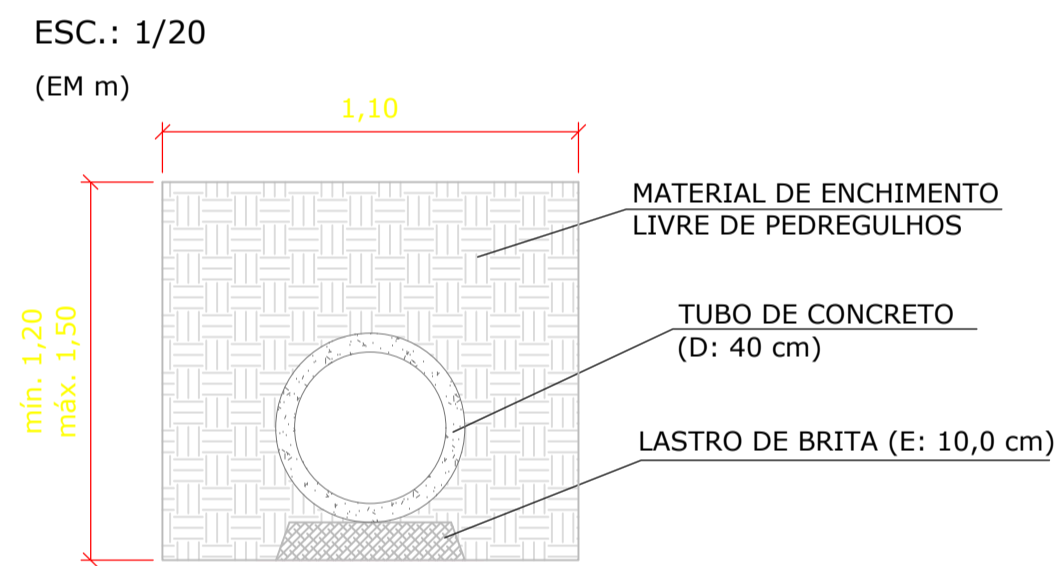


ESCALA: 1/300

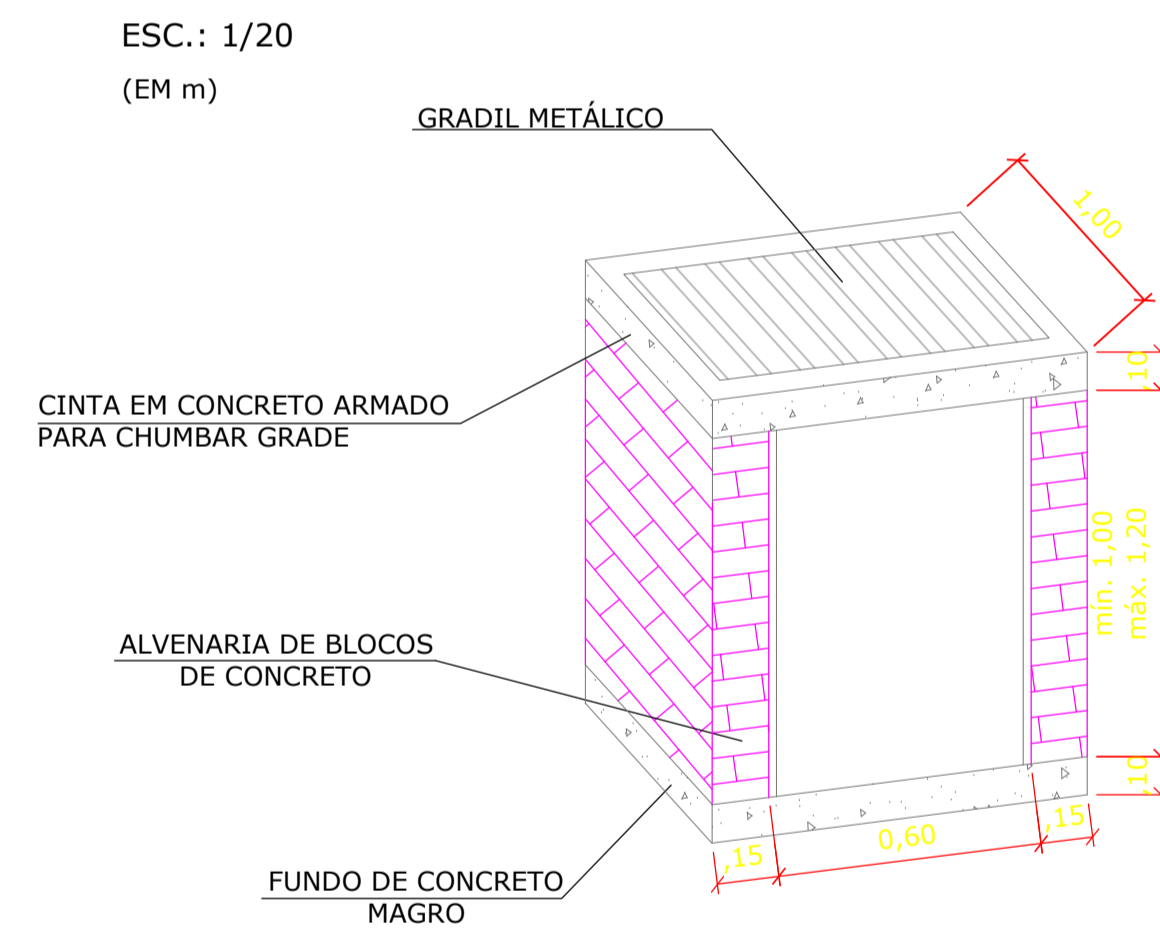
**TUBO DE CONCRETO PA1 (D: 40 cm)**  
ESC.: 1/20



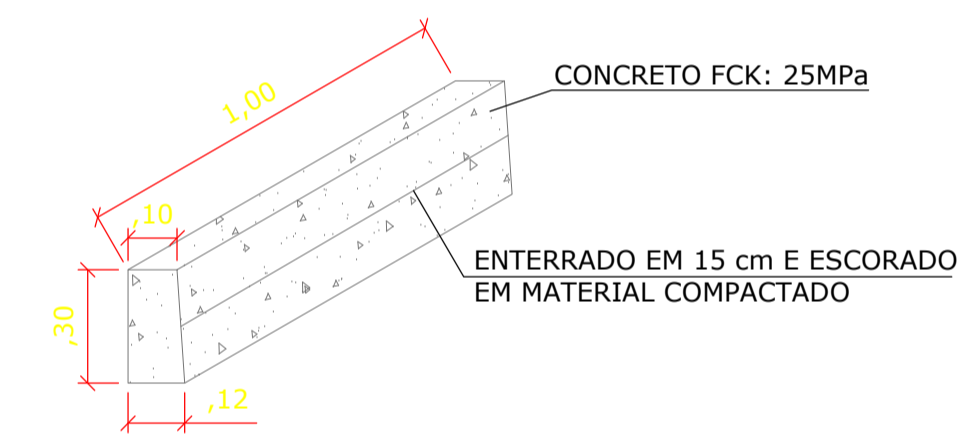
**CORTE TRANSVERSAL TUBULAÇÃO Ø0,40**  
ESC.: 1/20 (EM m)



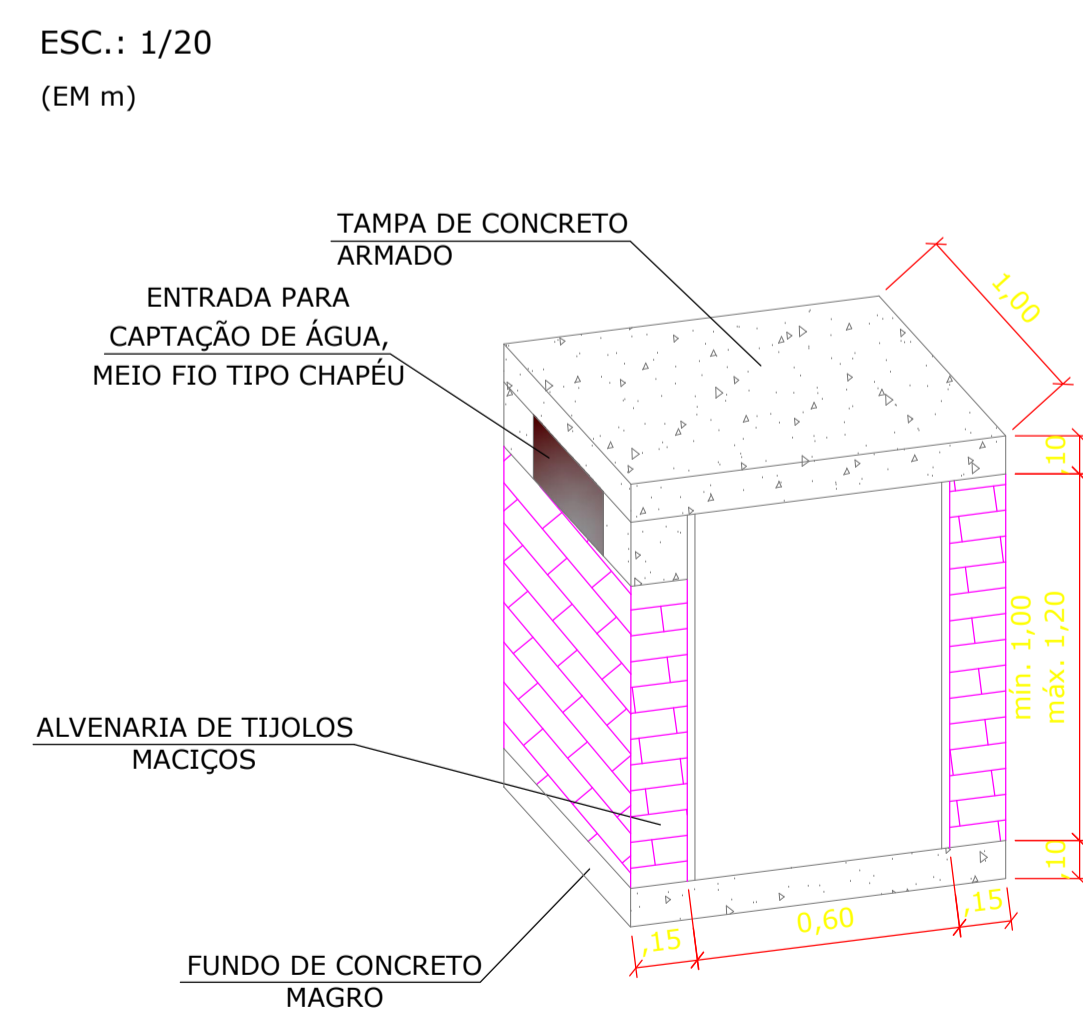
**BOCA DE LOBO COM GRELHA RETANGULAR**  
ESC.: 1/20 (EM m)



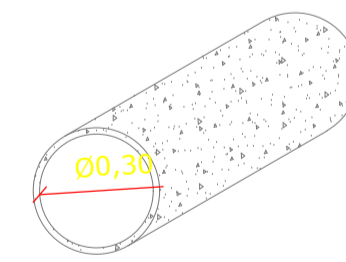
**MEIO FIO**  
ESC.: 1/20 (EM m)



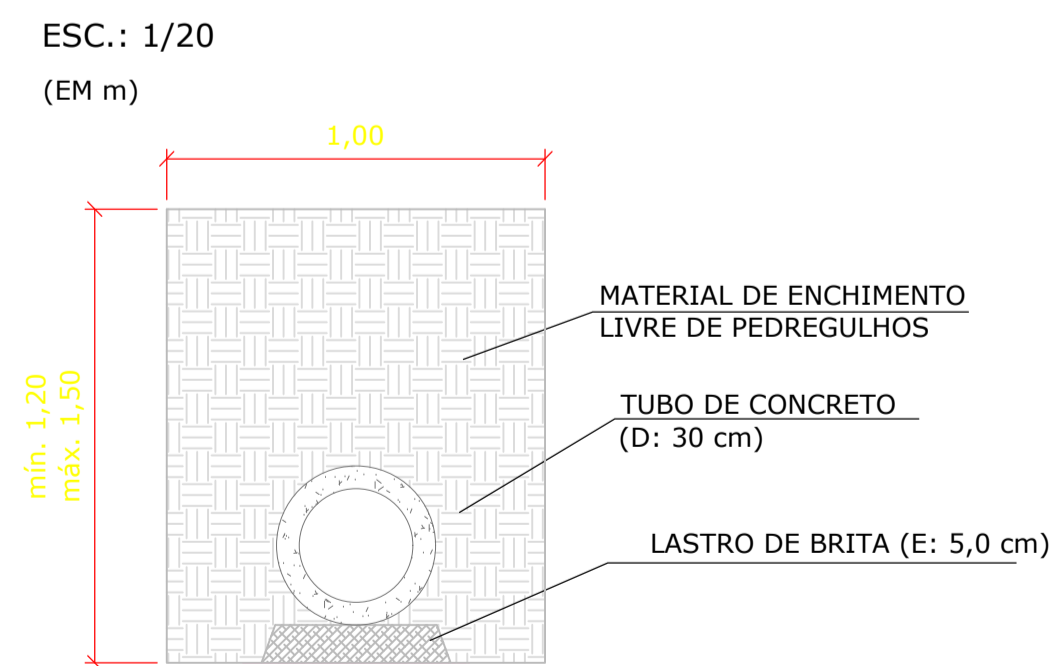
**BOCA DE LOBO SIMPLES COM TAMPA**  
ESC.: 1/20 (EM m)




**TUBO DE CONCRETO PA-1 (D: 30 cm)**  
ESC.: 1/20



**CORTE TRANSVERSAL TUBULAÇÃO Ø0,30**  
ESC.: 1/20 (EM m)



 <p><b>PREFEITURA MUNICIPAL DE ANTA GORDA / RS</b> Projeto de pavimentação de via em blocos de concreto intertravados</p>		
Francisco David Frighetto Prefeito Municipal		Jonas Gerhard Haas CREA RS225465
Des. Jonas Hoel ÁREA: 1468,85m² DATA: 08/2024	PROJETO: Perfil da estrada e detalhes LOCALIZAÇÃO: Rua Barão do Rio Branco, Interior, Anta Gorda/RS	PRANCHA:  03/04