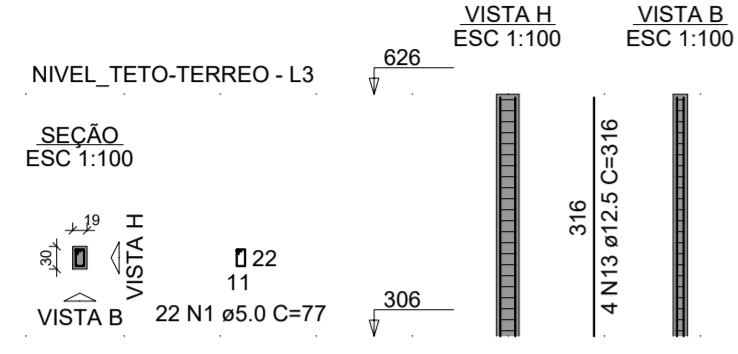
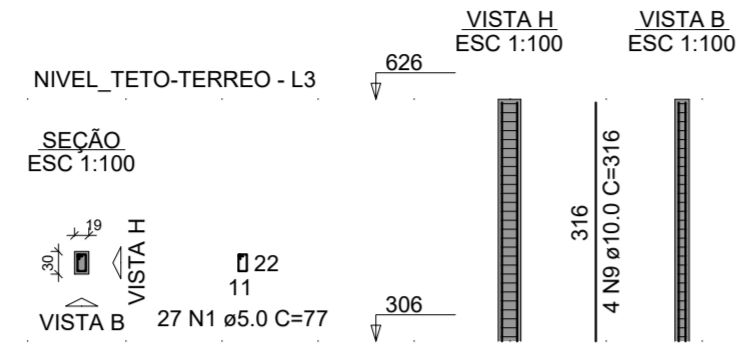


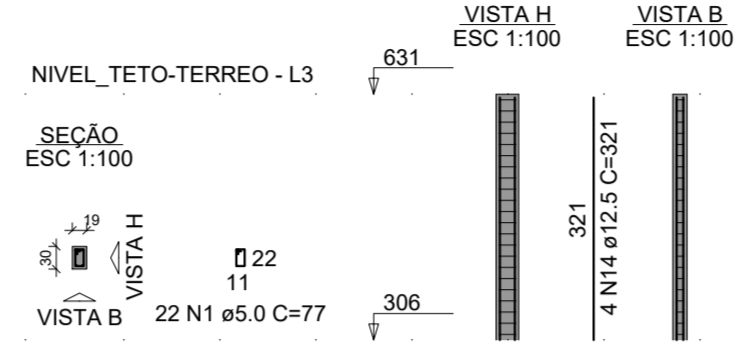
P1=P6=P37



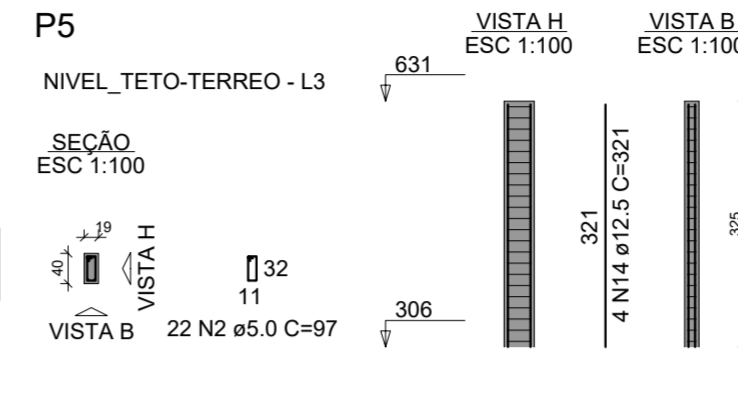
P2=P4=P7=P8=P12=P15=P20=P21=
=P38



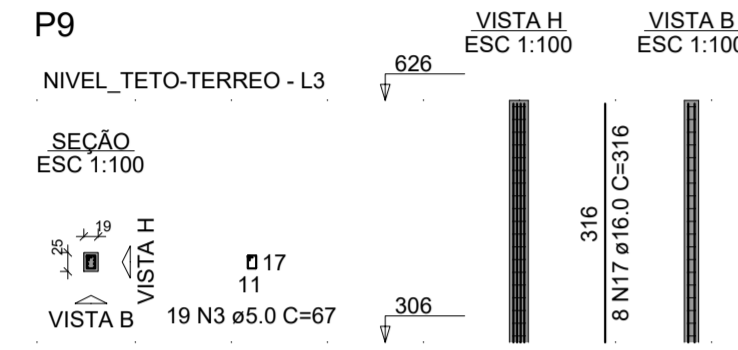
P3=P35=P40



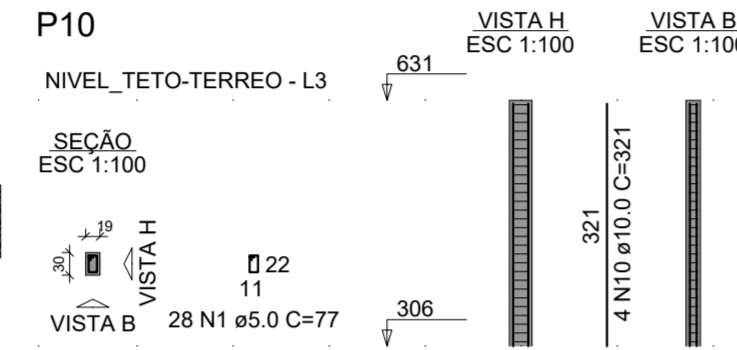
P5



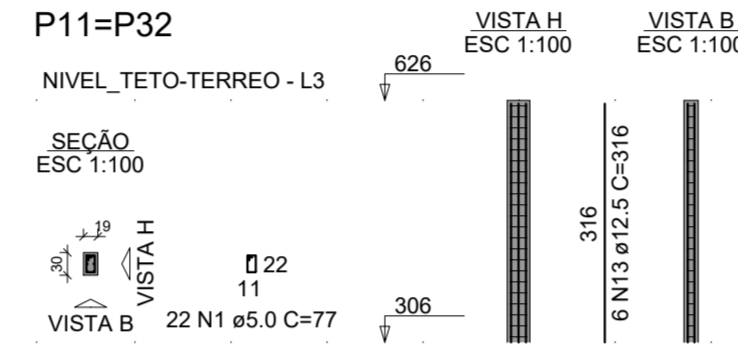
P9



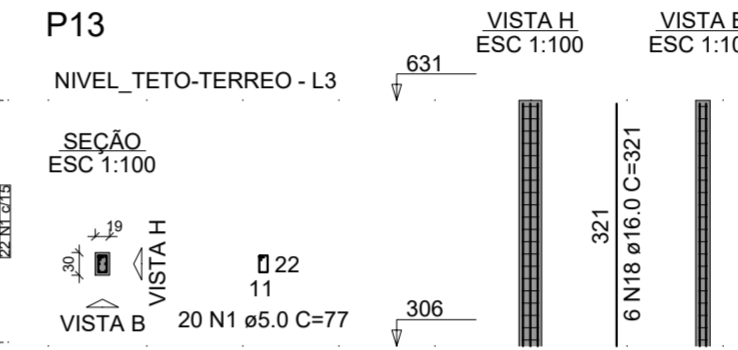
P10



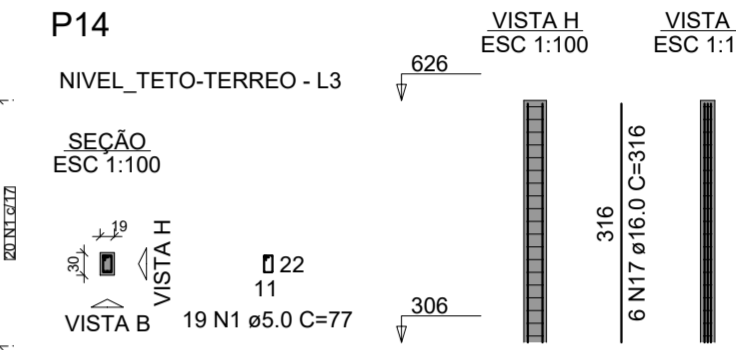
P11=P32



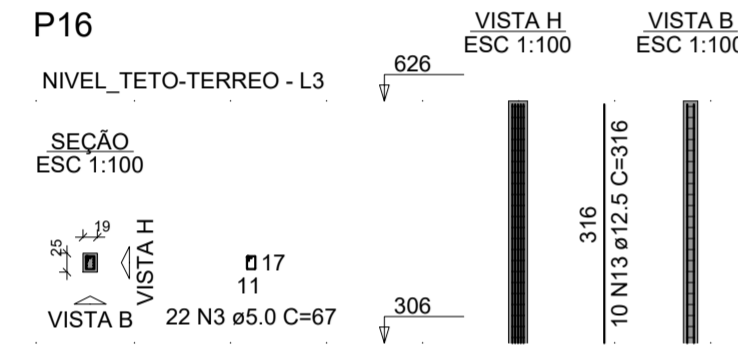
P13



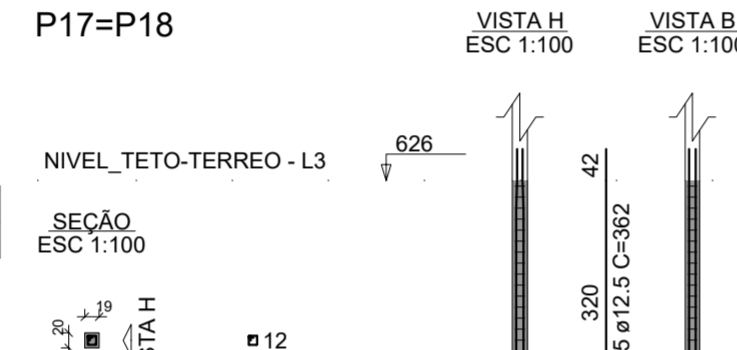
P14



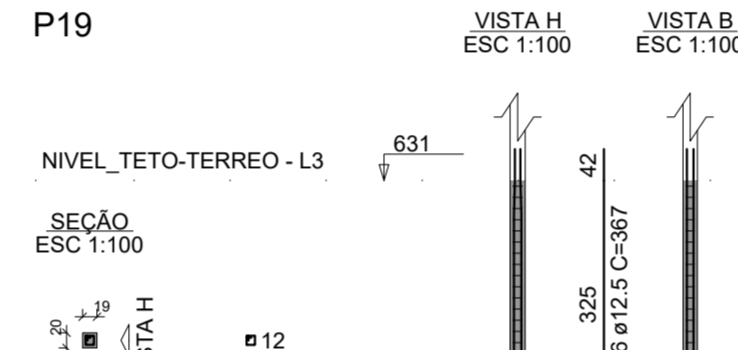
P16



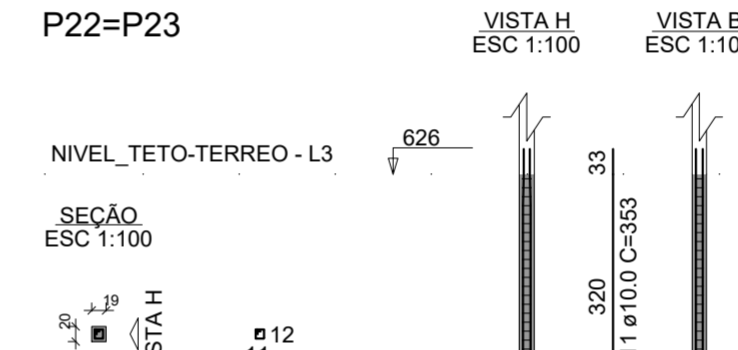
P17=P18



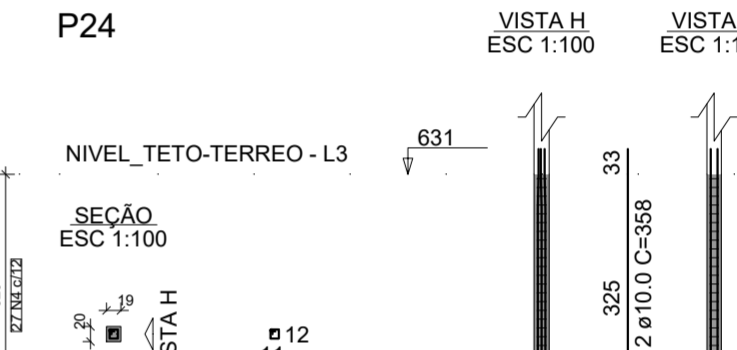
P19



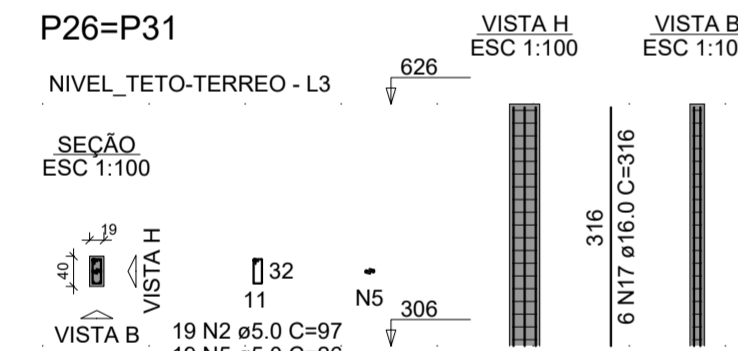
P22=P23



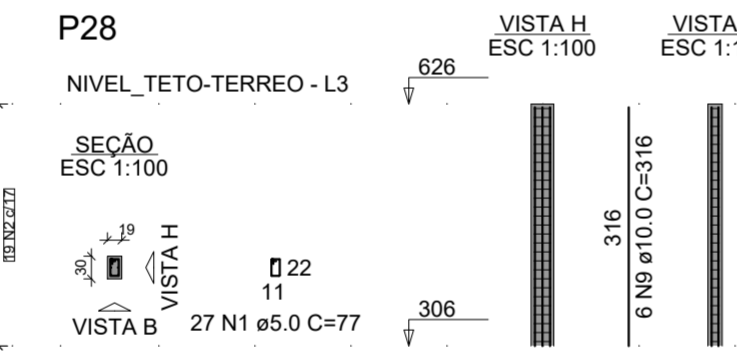
P24



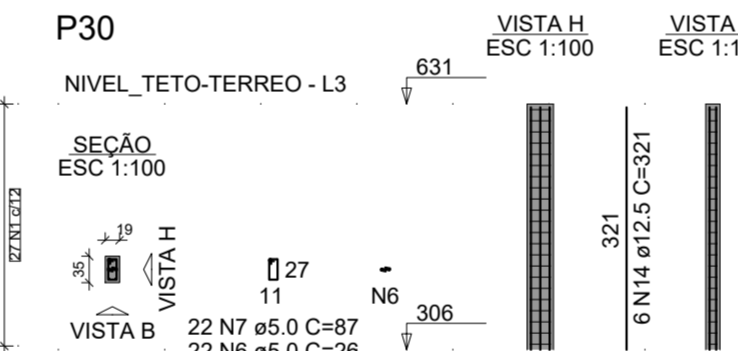
P26=P31



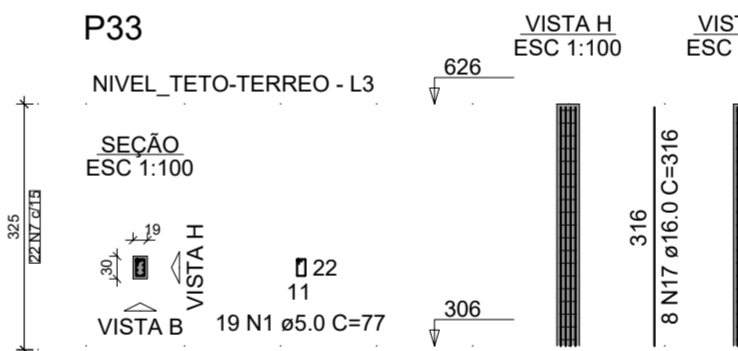
P28



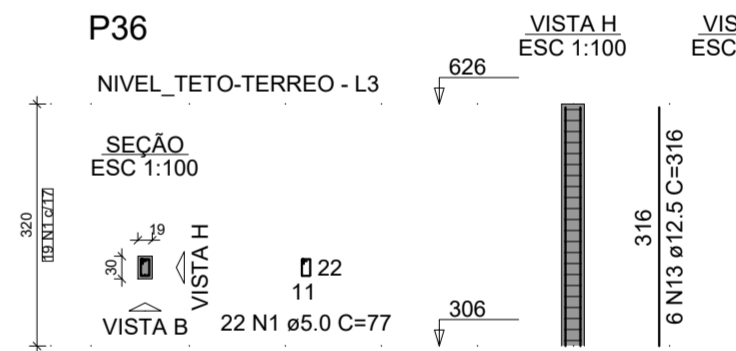
P30



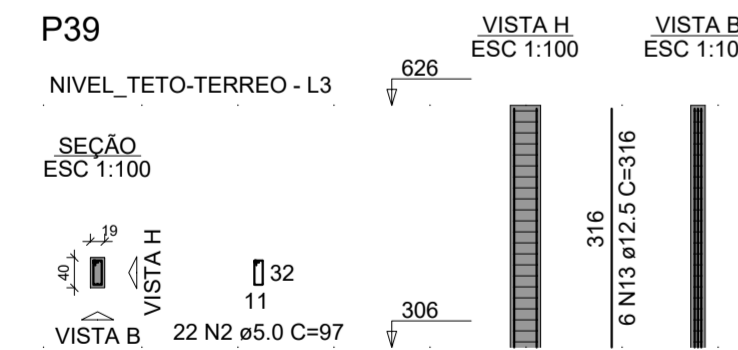
P33



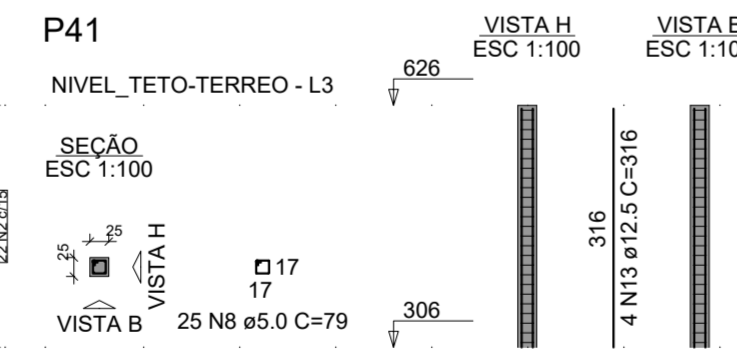
P36



P39



P41



RELAÇÃO DO AÇO

AÇO	N	DIAM (mm)	QUANT	C.UNIT (cm)	C.TOTAL (cm)
3xP1					
P5					
2xP11					
P16					
2xP22					
P28					
P36					
9xP2					
P9					
P13					
2xP17					
P24					
P30					
P39					
3xP3					
P10					
P14					
P19					
2xP26					
P33					
P41					

RESUMO DO AÇO

AÇO	DIAM (mm)	C.TOTAL (m)	PESO (kg)
CA50	10.0	195.3	120.50
	12.5	272.3	262.22
	16.0	126.7	199.93
CA60	5.0	672.4	103.55
PESO TOTAL (kg)			
CA50	582.85		
CA60	103.55		

Volume de concreto (C-30) = 6.64 m³
Área de forma = 114.93 m²



PREFEITURA MUNICIPAL DE ANTA GORDA / RS
Projeto de construção de nova sede do CRAS

Francisco David Frighetto
Prefeito Municipal

Altos Engenharia e Projetos LTDA
CNPJ: 42.970.303/0001-87

Des. Luon Damelio	<p>ÁREA: 441,27m²</p> <p>DATA: 01/2025</p>	<p>PROJETO: Armaduras pilares teto Térreo (nível +6,26);</p> <p>LOCALIZAÇÃO: Rua Irmã Lucia Scapini, nº 710, centro, Anta Gorda/RS</p>
		<p>FRANCHA: 09/18</p>