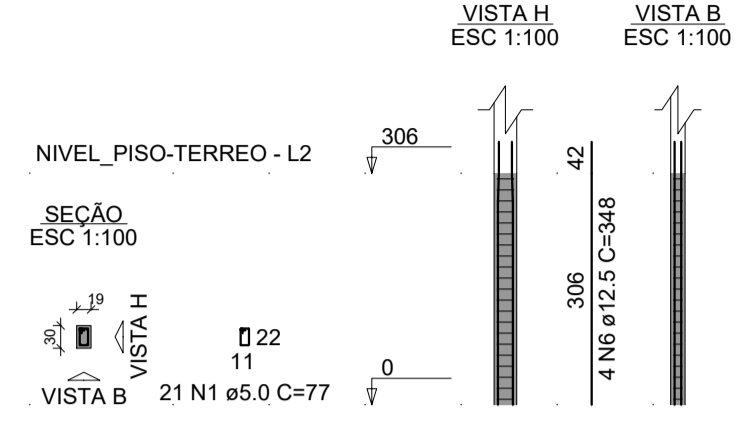
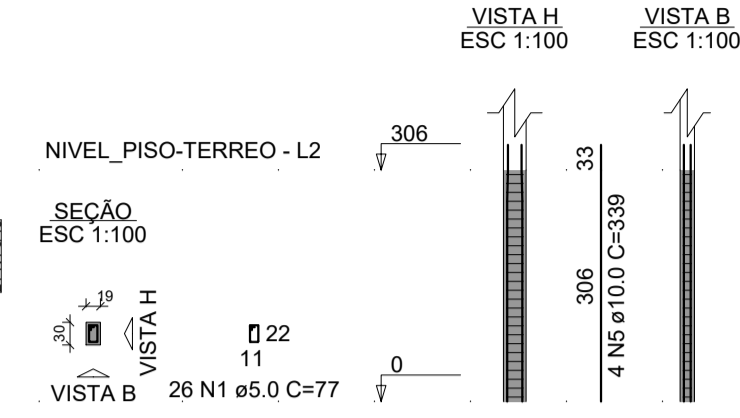


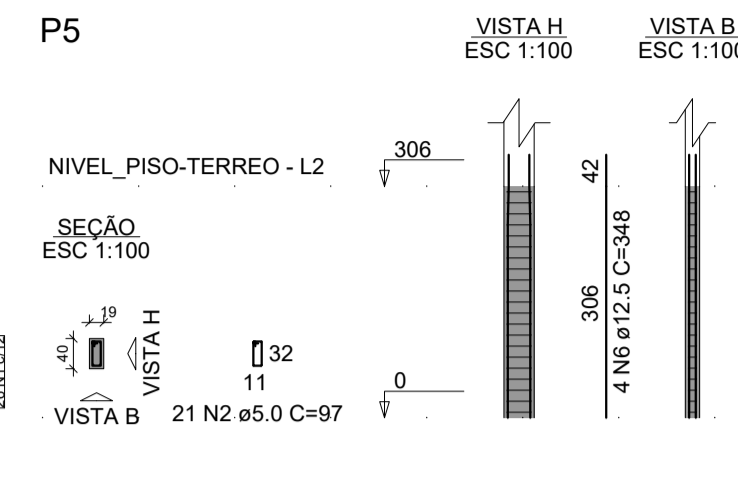
P1=P3=P6



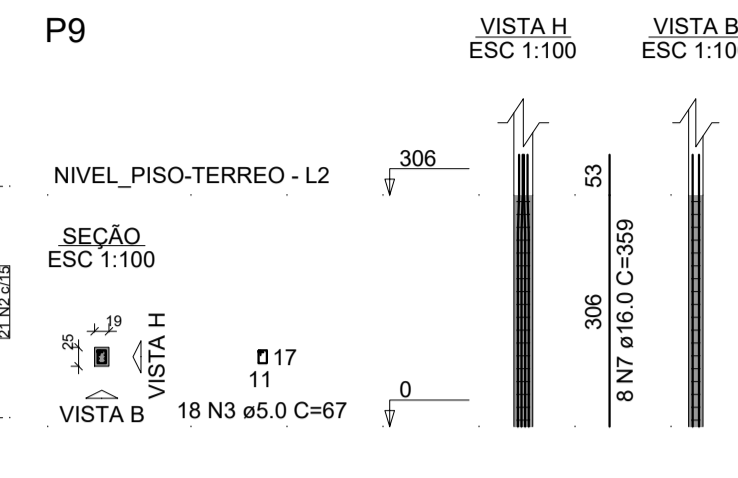
P2=P4=P7=P8=P10=P12=P15=P20=
=P21



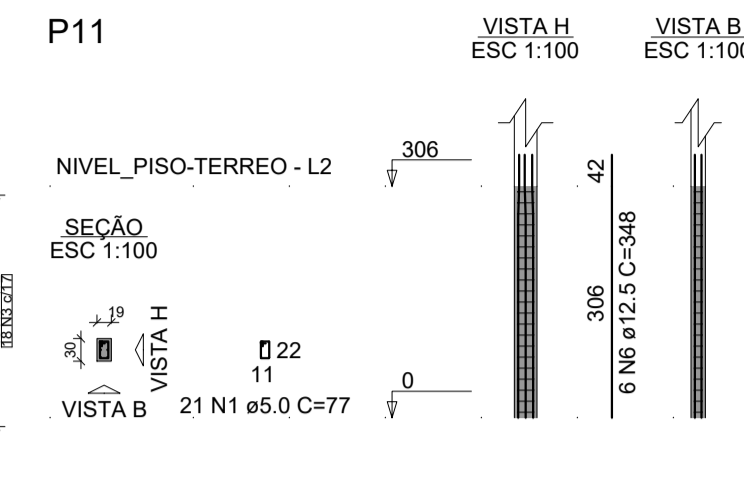
P5



P9



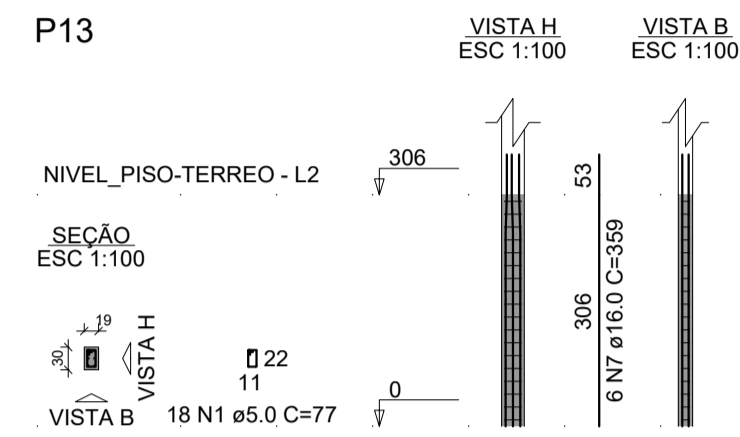
P11



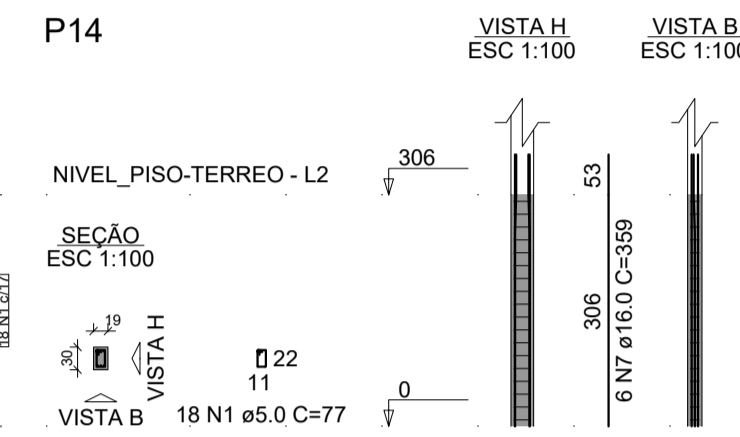
RELAÇÃO DO AÇO

AÇO	N	DIAM (mm)	QUANT	C.UNIT (cm)	C.TOTAL (cm)
CA60	1	5.0	354	77	27258
	2	5.0	21	97	2037
	3	5.0	39	67	2613
CA50	4	5.0	63	57	3591
	5	10.0	36	339	12204
	6	12.5	44	348	15312
	7	16.0	20	359	7180

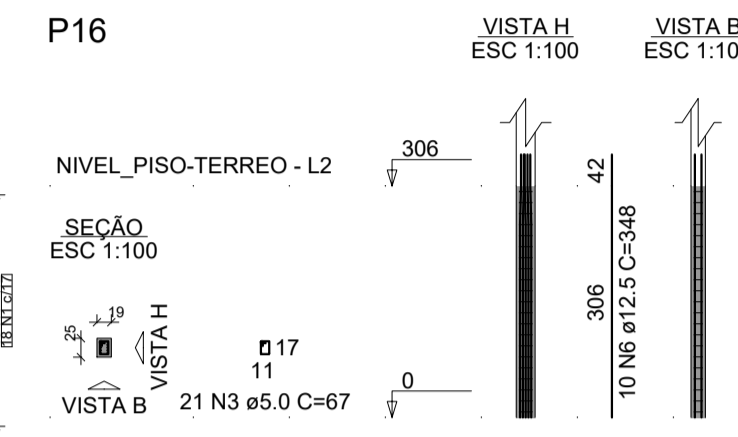
P13



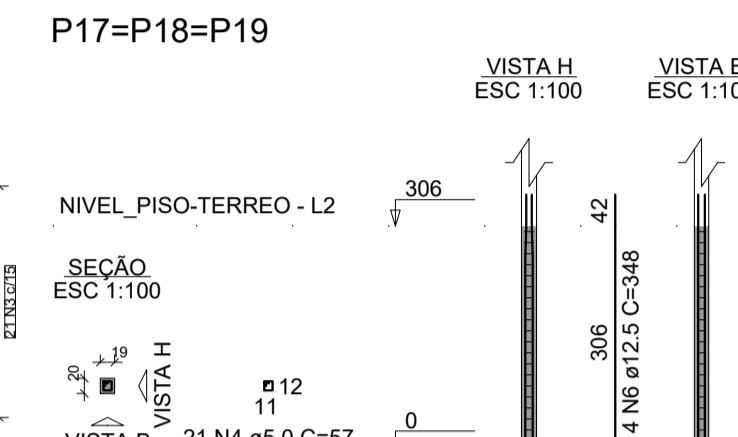
P14



P16



P17=P18=P19



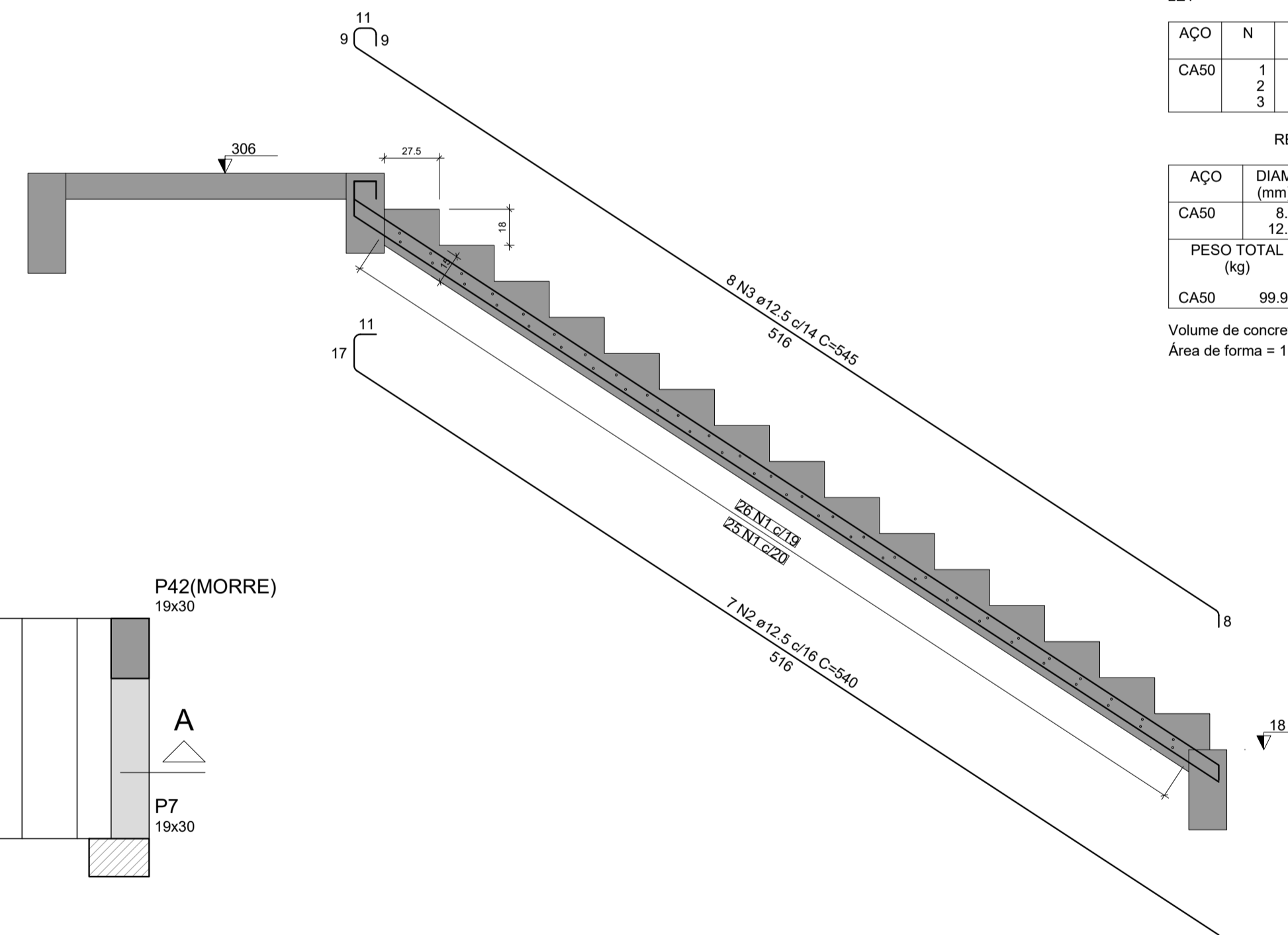
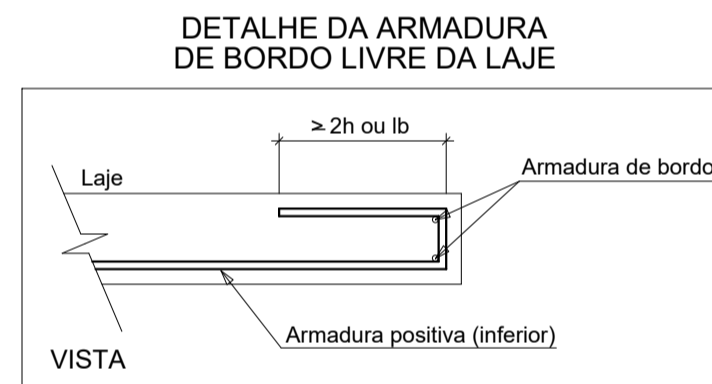
RESUMO DO AÇO

AÇO	DIAM (mm)	C.TOTAL (m)	PESO (kg)
CA50	10.0	122	75.27
	12.5	153.1	147.44
	16.0	71.8	113.30
	5.0	355	54.67

PESO TOTAL (kg)

CA50	336.01
CA60	54.67

Volume de concreto (C-30) = 3.49 m³
Área de forma = 61.14 m²



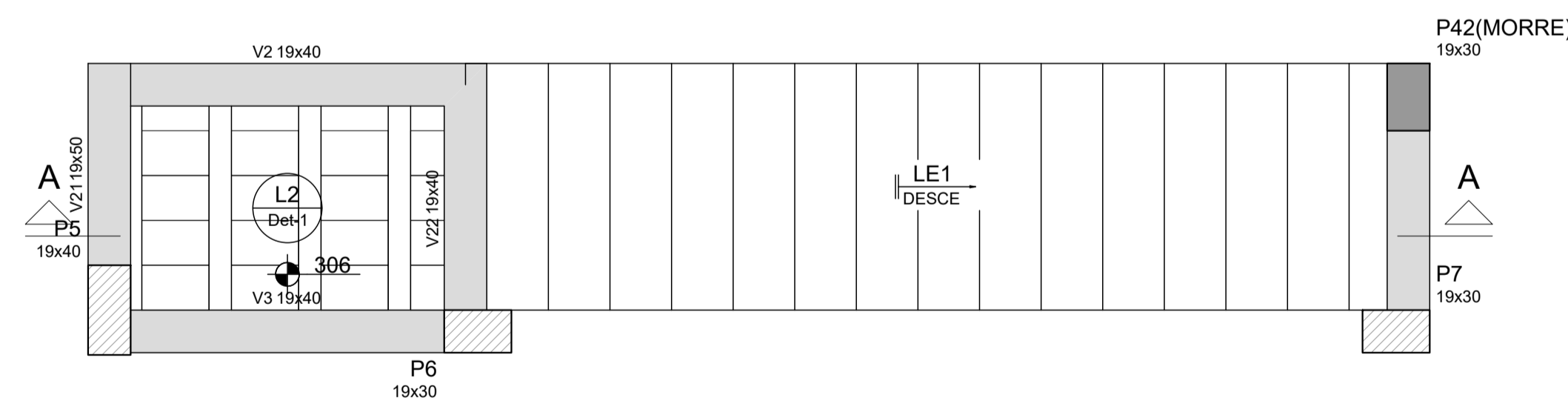
RELAÇÃO DO AÇO

AÇO	N	DIAM (mm)	QUANT	C.UNIT (cm)	C.TOTAL (cm)
CA50	1	8.0	51	107	5457
	2	12.5	7	540	3780
	3	12.5	8	545	4360

RESUMO DO AÇO

AÇO	DIAM (mm)	C.TOTAL (m)	PESO (kg)
CA50	8.0	54.6	21.57
	12.5	81.4	78.39
PESO TOTAL (kg)			99.96

Volume de concreto (C-30) = 1.24 m³
Área de forma = 11.61 m²



Armação positiva da escada E1

ESC 1:25

5	101	5
	26 N1 ø8.0 C=107	
5	101	5
	25 N1 ø8.0 C=107	

Corte A-A (LE1)

ESC 1:25

PREFEITURA MUNICIPAL DE ANTA GORDA / RS
Projeto de construção de nova sede do CRAS

Francisco David Frighetto
Prefeito Municipal

Altos Engenharia e Projetos LTDA
CNPJ: 42.970.303/0001-87

ÁREA: 441,27m²
PROJETO: Armaduras da escada e pilares piso Térreo (nível +3,06);
DATA: 01/2023
LOCALIZAÇÃO: Rua Imã Luiza Supahi, nº 716, centro, Anta Gorda/RS

FRANCHA: 06/18