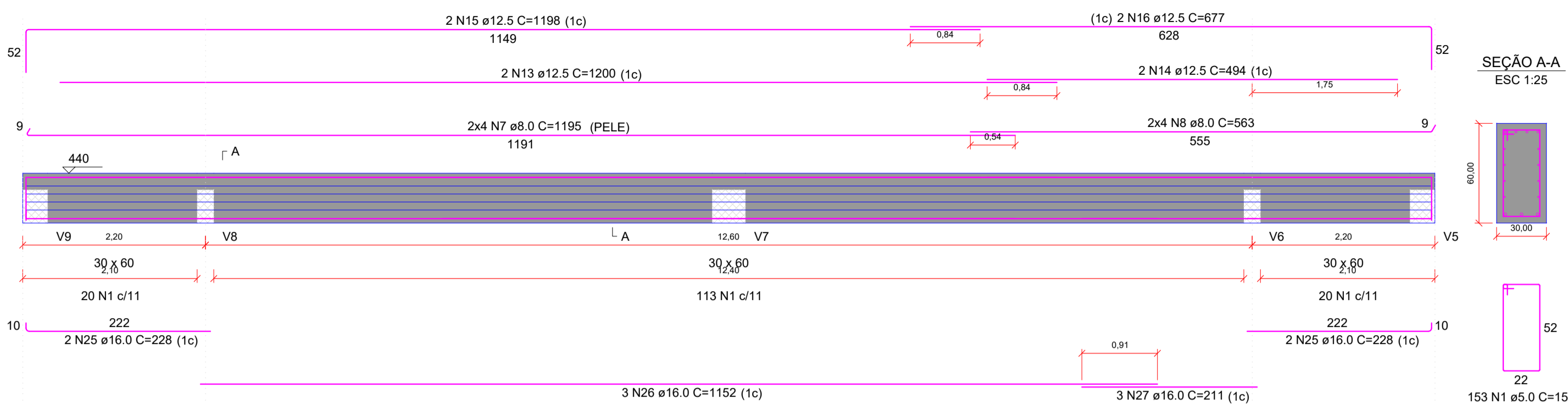


# VIGAS

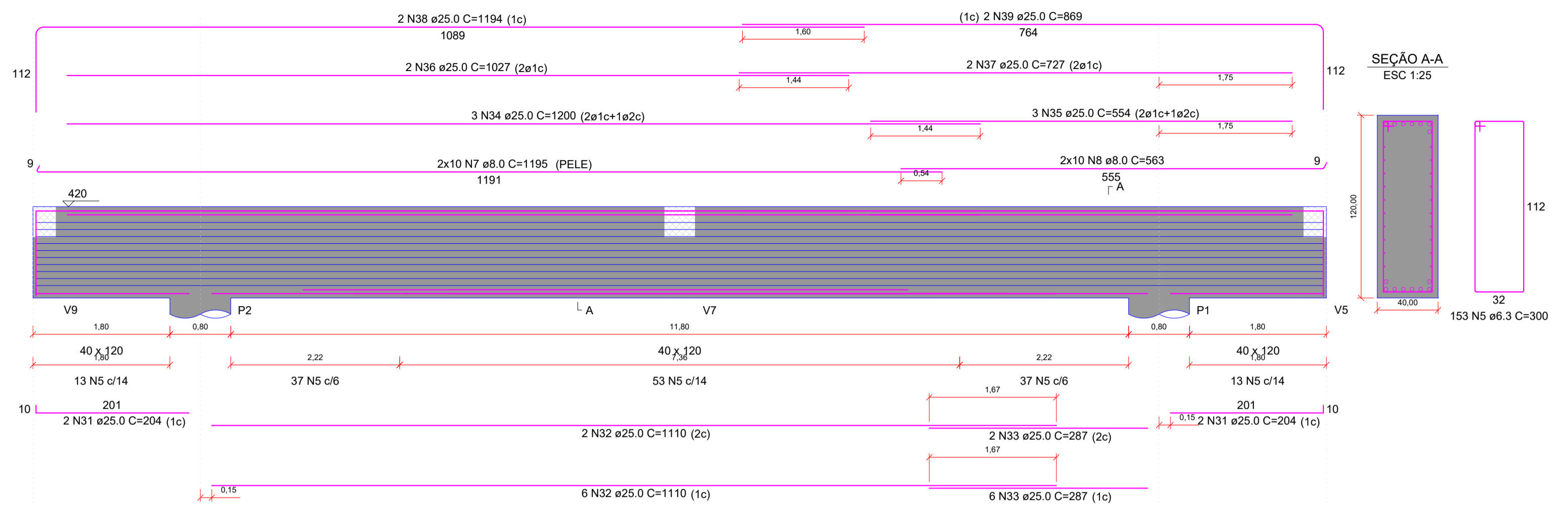
## V1

ESC 1:50



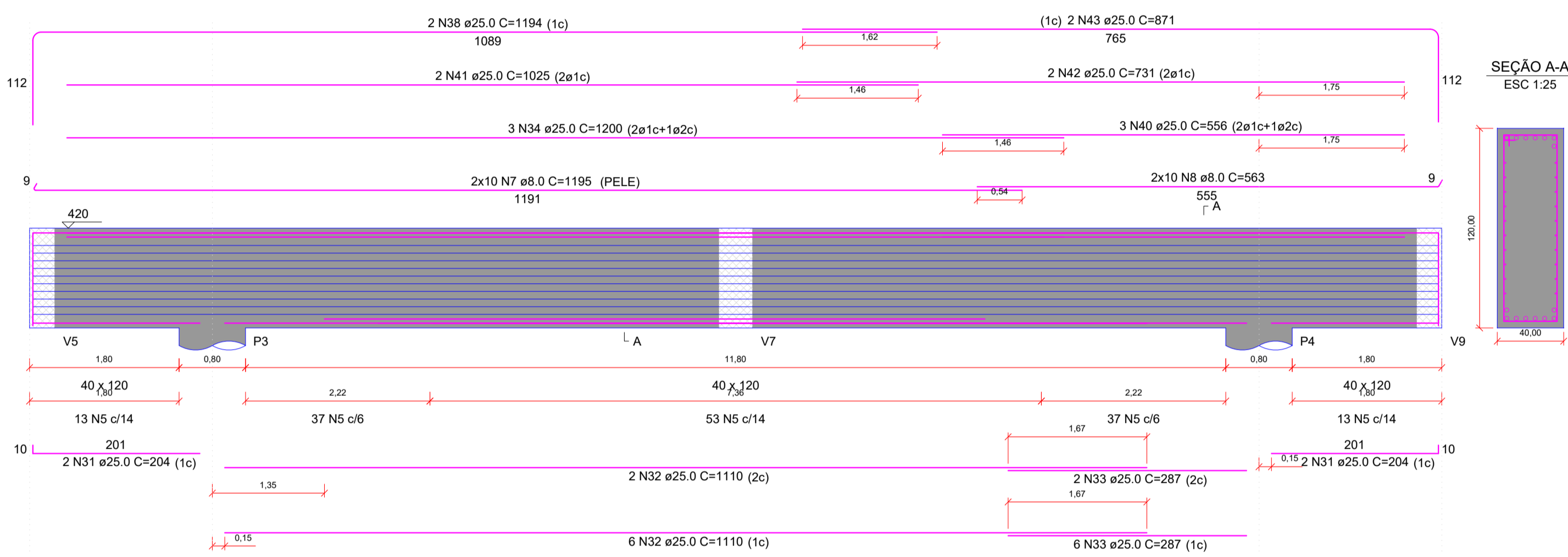
## V2

ESC 1:50



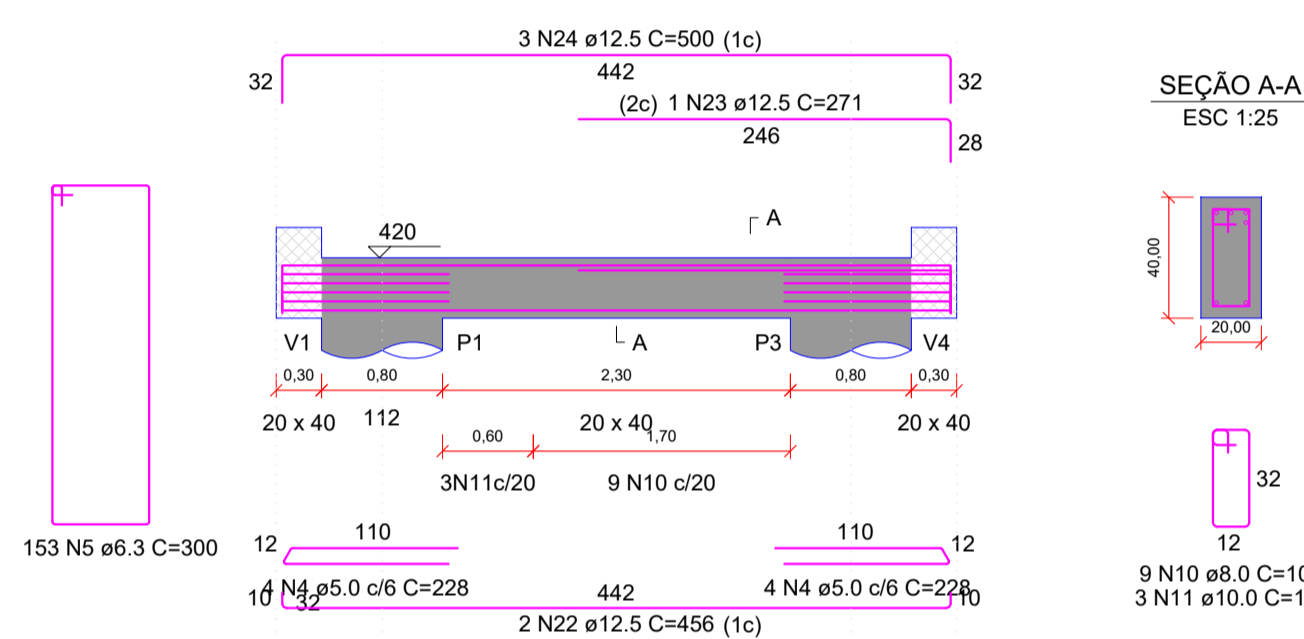
## V3

ESC 1:50



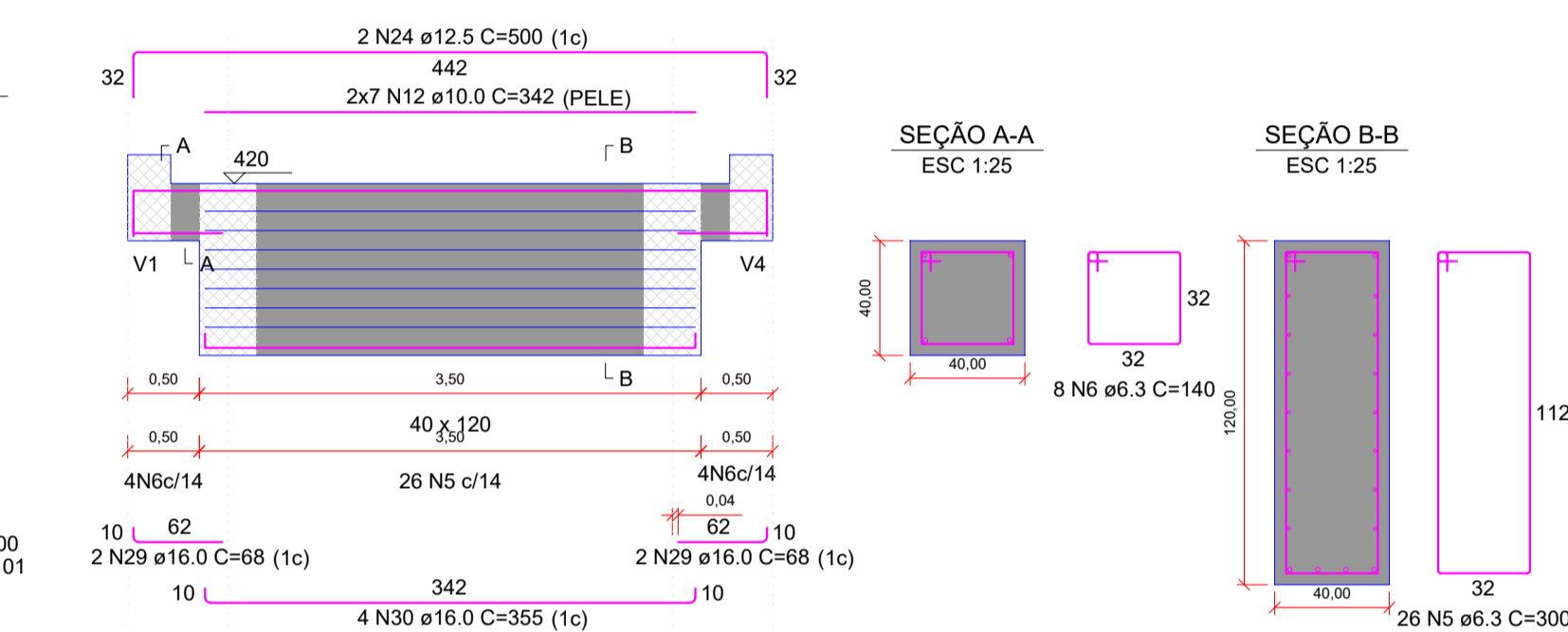
## V6

ESC 1:50



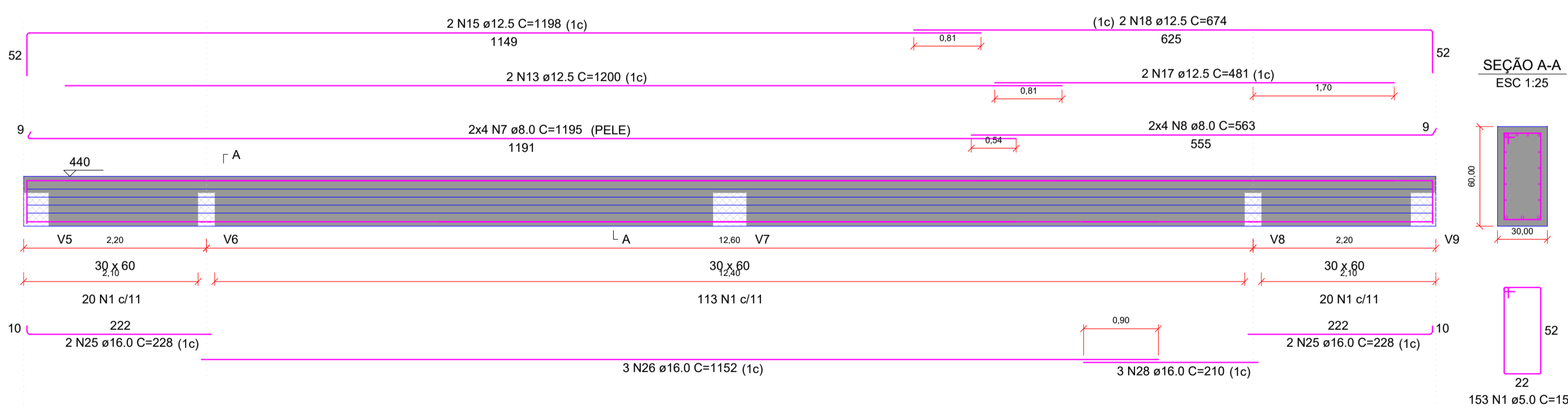
## V7

ESC 1:50



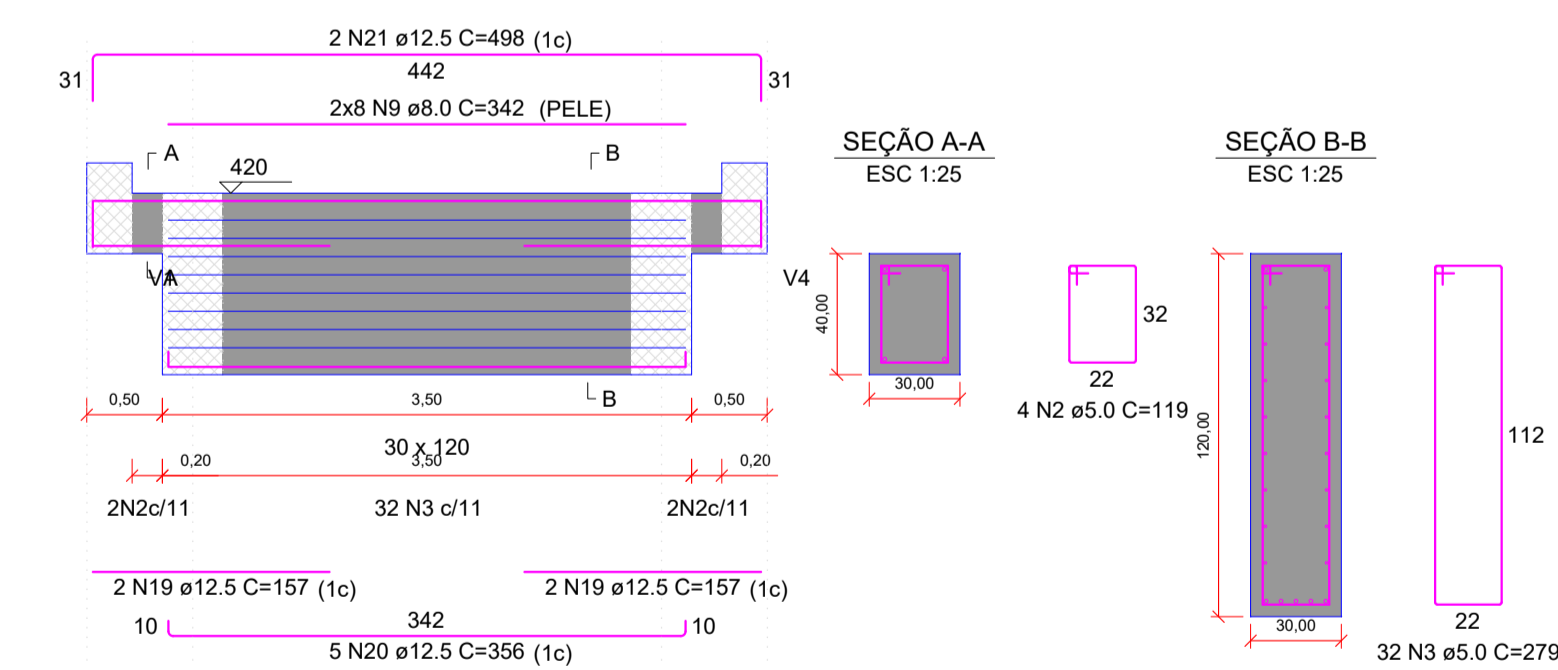
## V4

ESC 1:50



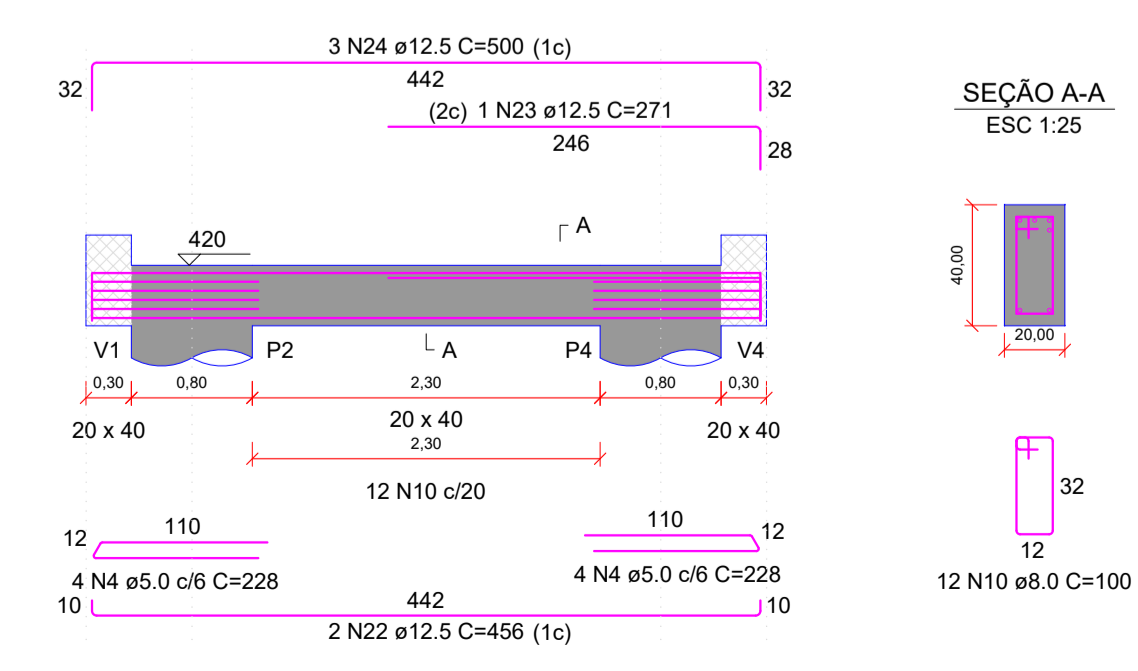
## V5

ESC 1:50



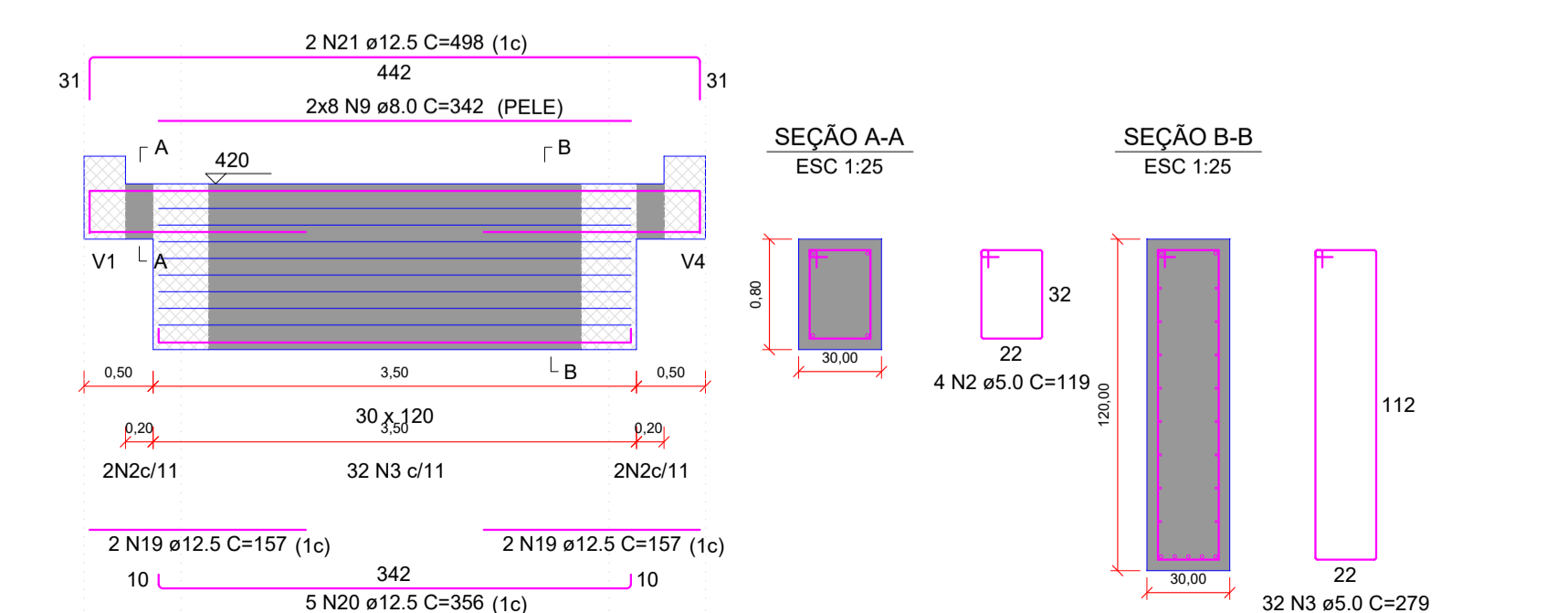
## V8

ESC 1:50



## V9

ESC 1:50



RELAÇÃO DO AÇO

AÇO	N	DIAM (mm)	QUANT	C.UNIT (cm)	C.TOTAL (m)
CA60	1	5.0	306	159	48654
	2	5.0	8	119	952
	3	5.0	64	279	17856
	4	5.0	16	228	3648
	5	6.3	332	300	99600
	6	6.3	8	140	1120
	7	8.0	56	1195	66920
	8	8.0	56	563	31528
	9	8.0	32	342	10944
	10	8.0	21	100	2100
	11	10.0	3	101	303
	12	10.0	14	342	4788
	13	12.5	4	1200	4800
	14	12.5	2	494	988
	15	12.5	4	1198	4792
	16	12.5	2	677	1354
	17	12.5	2	481	962
	18	12.5	2	674	1348
	19	12.5	8	157	1256
	20	12.5	10	356	3560
	21	12.5	4	498	1992
	22	12.5	4	456	1824
	23	12.5	2	271	542
	24	12.5	8	500	4000
	25	16.0	8	228	1824
	26	16.0	6	1152	6912
	27	16.0	3	211	633
	28	16.0	3	210	630
	29	16.0	4	68	272
	30	16.0	4	355	1420
	31	25.0	8	204	1632
	32	25.0	16	1110	17760
	33	25.0	16	287	4592
	34	25.0	6	1200	7200
	35	25.0	8	554	4432
	36	25.0	2	1027	2054
	37	25.0	2	727	1454
	38	25.0	4	1194	4776
	39	25.0	2	869	1738
	40	25.0	3	556	1668
	41	25.0	2	1025	2050
	42	25.0	2	731	1462
	43	25.0	2	871	1742

RESUMO DO AÇO

AÇO	DIAM (mm)	C.TOTAL (m)	PESO (kg)
CA50	6.3	1007.2	246.76
	8.0	1114.9	440.39
	10.0	50.9	31.41
	12.5	274.2	264.05
	16.0	116.9	184.47
	25.0	497.9	1918.41
	5.0	711.1	109.51
PESO TOTAL (kg)			
CA50		3085.49	
CA60		109.51	

Volume de concreto (C-30) = 27.25 m³  
Área de forma = 155.18 m²

PREFEITURA MUNICIPAL DE ANTA GORDA / RS  
Projeto Básico para construção da ponte na Estrada Geral Linha Ferronato, sobre o Arroio Zeferino

Francisco David Frighetto  
Prefeito Municipal

Altos Engenharia e Projetos LTDA  
CNPJ: 42.970.303/0001-87

ÁREA: 76,50m²  
PROJETO: Vigas do tabuleiro (+4,20);  
DATA: 02/2025  
LOCALIZAÇÃO: Estrada Linha Ferronato, interior, Anta Gorda/RS

FRANCHA: 06/07