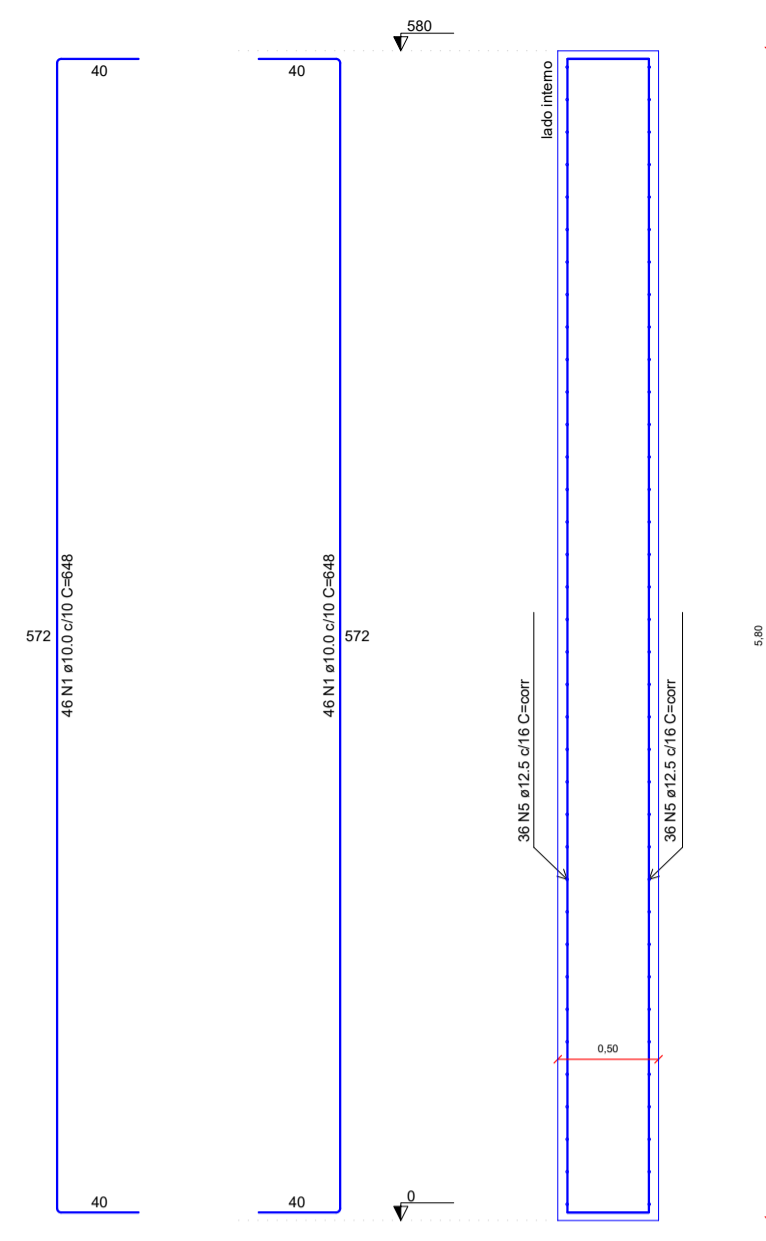
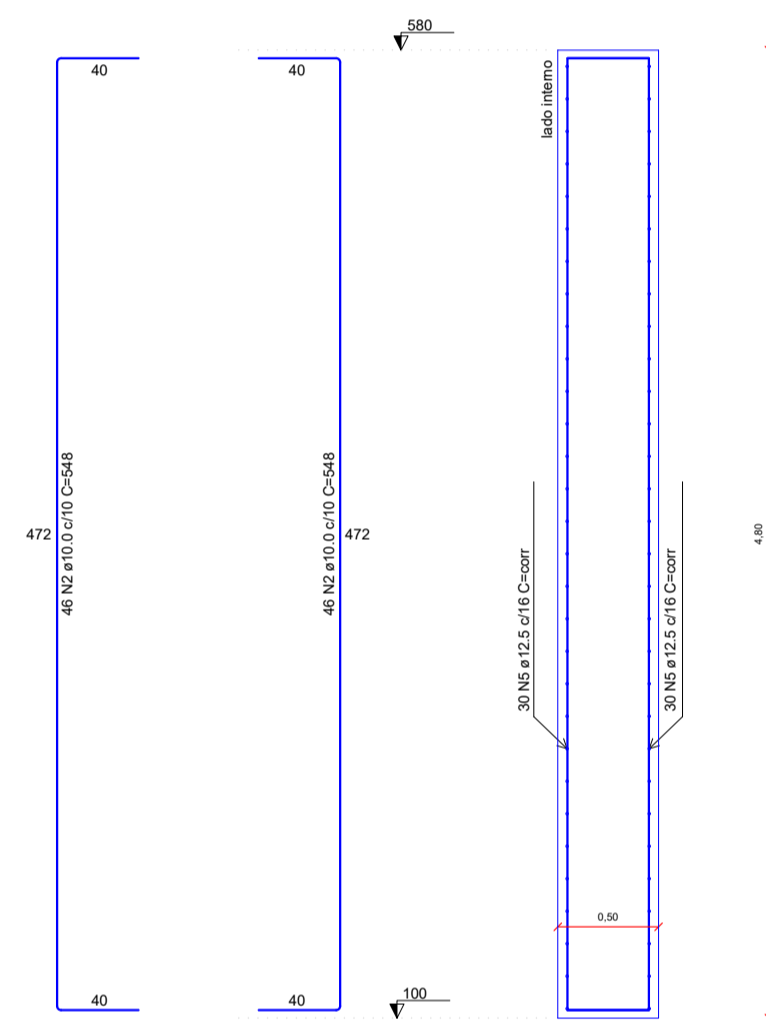


Contenções do pavimento Tabuleiro escala 1:50

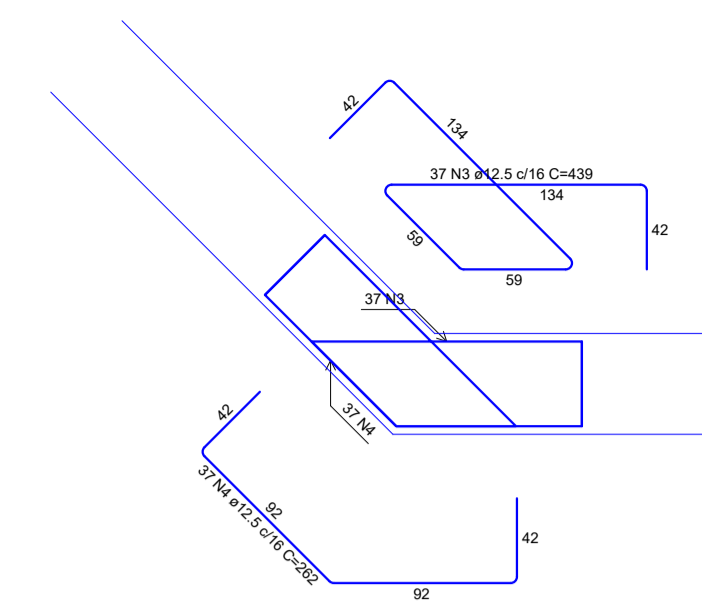
Contenções do pavimento Fundação escala 1:50



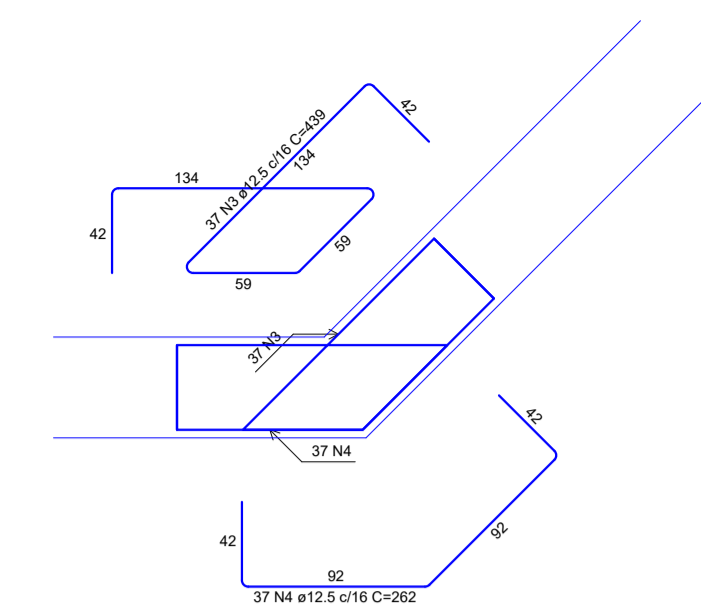
PAR1 = PAR3 = PAR4 ESC 1:25



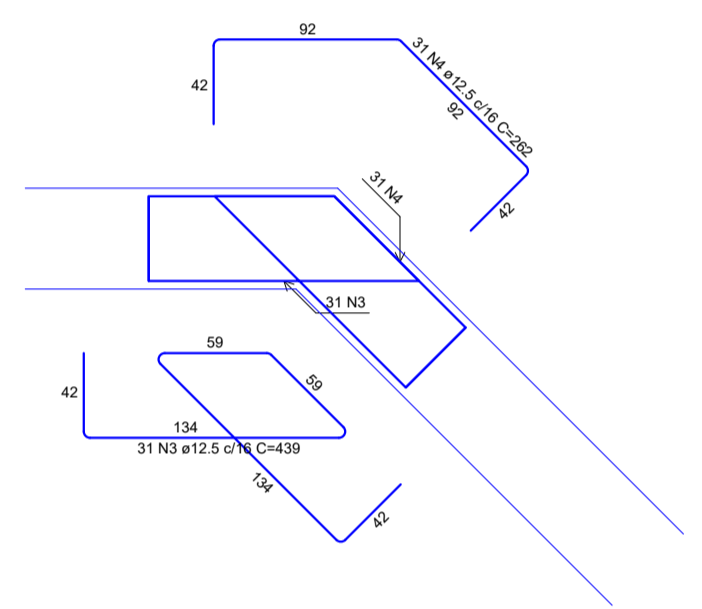
PAR2 = PAR5 = PAR6 ESC 1:25



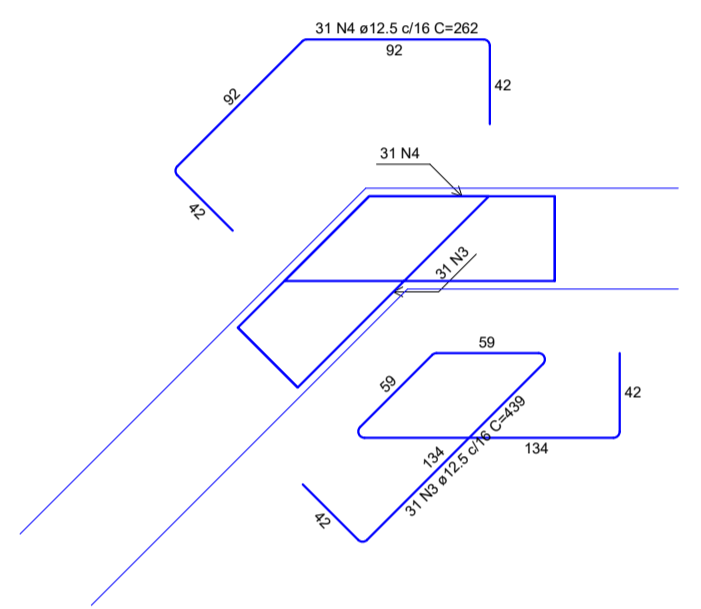
PAR1-PAR3 escala 1:25



PAR1-PAR4 escala 1:25



PAR2-PAR5 escala 1:25



PAR2-PAR6 escala 1:25

RELAÇÃO DO AÇO

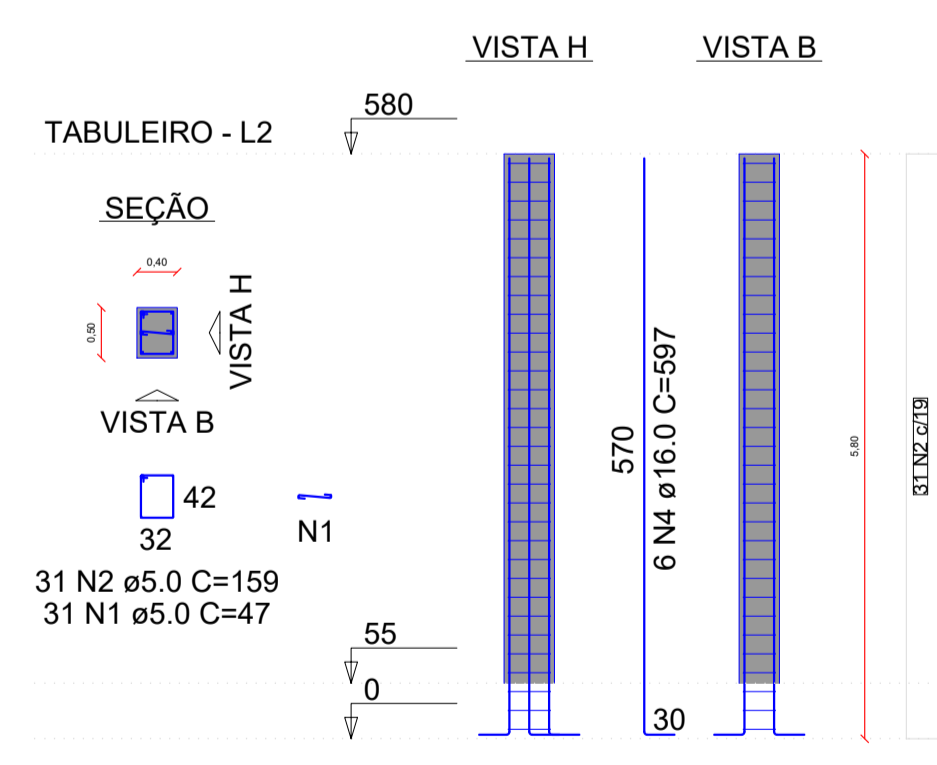
PARTE	PARTE	PARTE			
PAR1-PAR4	PAR2-PAR5	PAR1-PAR4			
AÇO	N	DIAM (mm)	QUANT	C UNIT (cm)	C TOTAL (cm)
CA50	1	10.0	276	648	178488
	2	10.0	276	548	151248
	3	12.5	136	432	58704
	4	12.5	136	262	35632
	5	12.5	366		45776

RESUMO DO AÇO

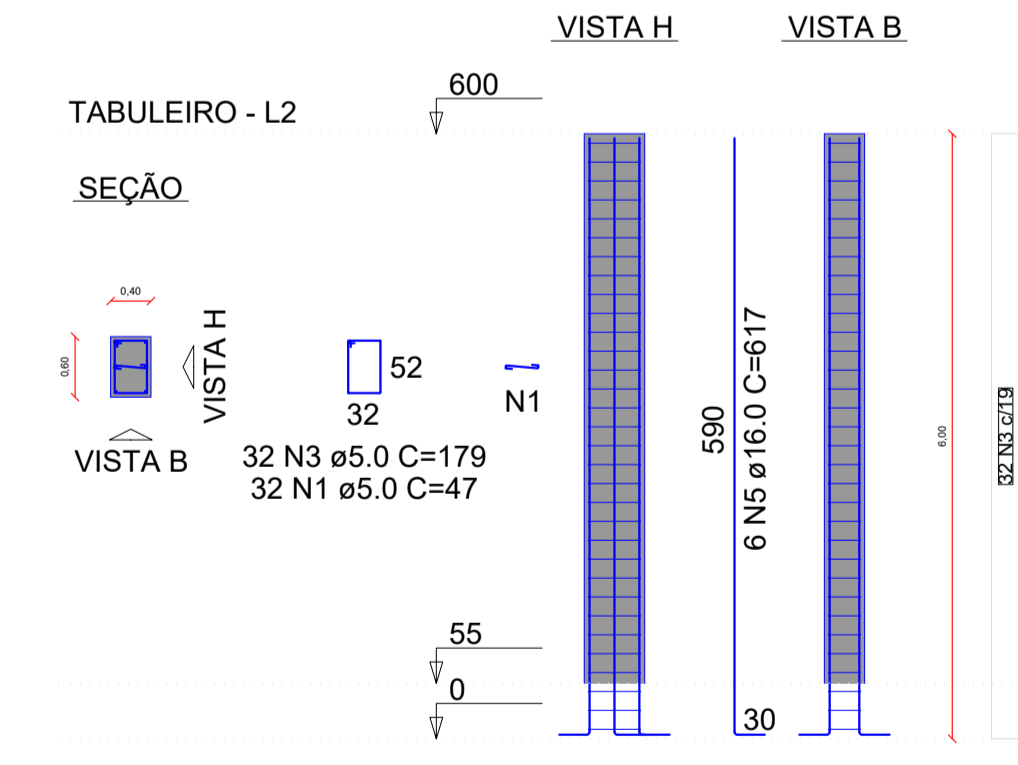
AÇO	DIAM (mm)	C TOTAL (m)	PESO (kg)
CA50	10.0	3300.96	2766.69
	12.5	2758.12	2627.03
PESO TOTAL			5393.72

Volume de concreto (C-30) = 17.15 * 5.25 * 7.15 * 4.25 = 67.80 m³
 Área de forma = (29.69 * 5.25 + 29.69 * 4.25) * 282.06 m²

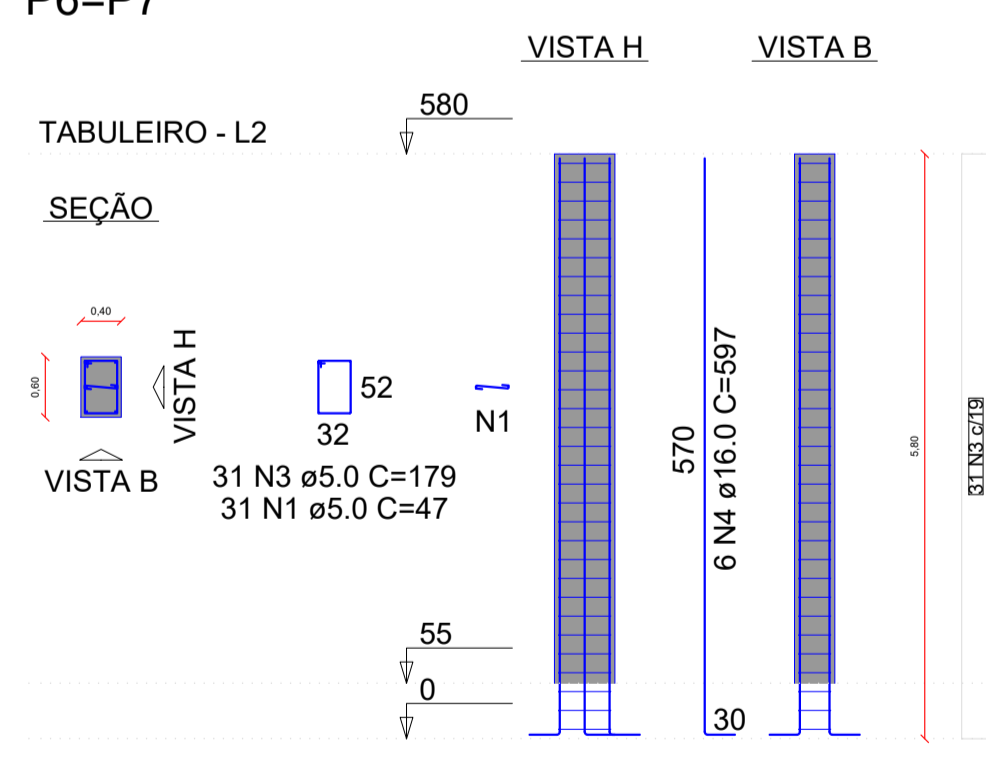
P1=P2=P3=P4



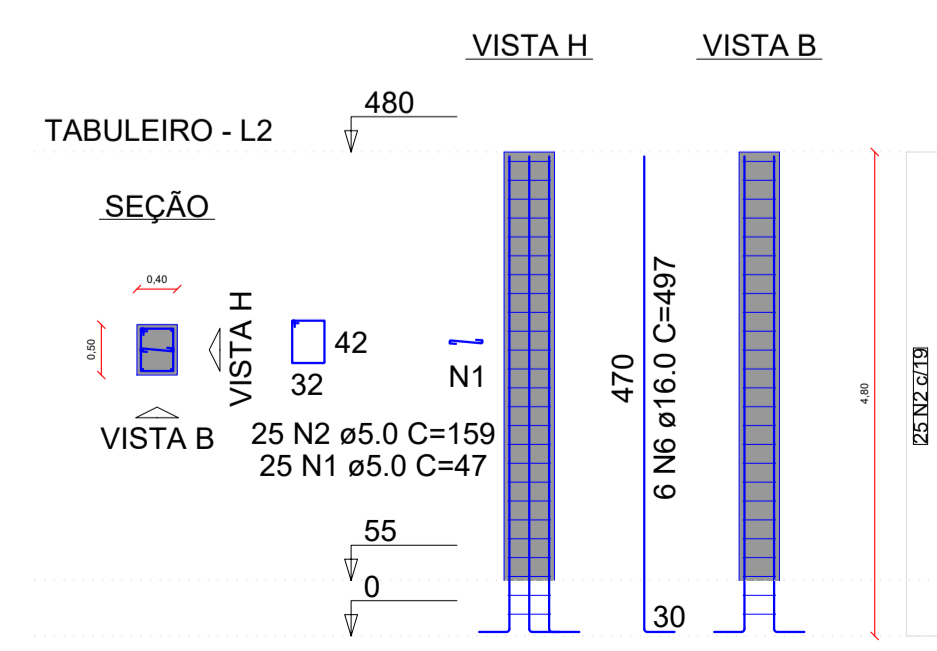
P5=P8



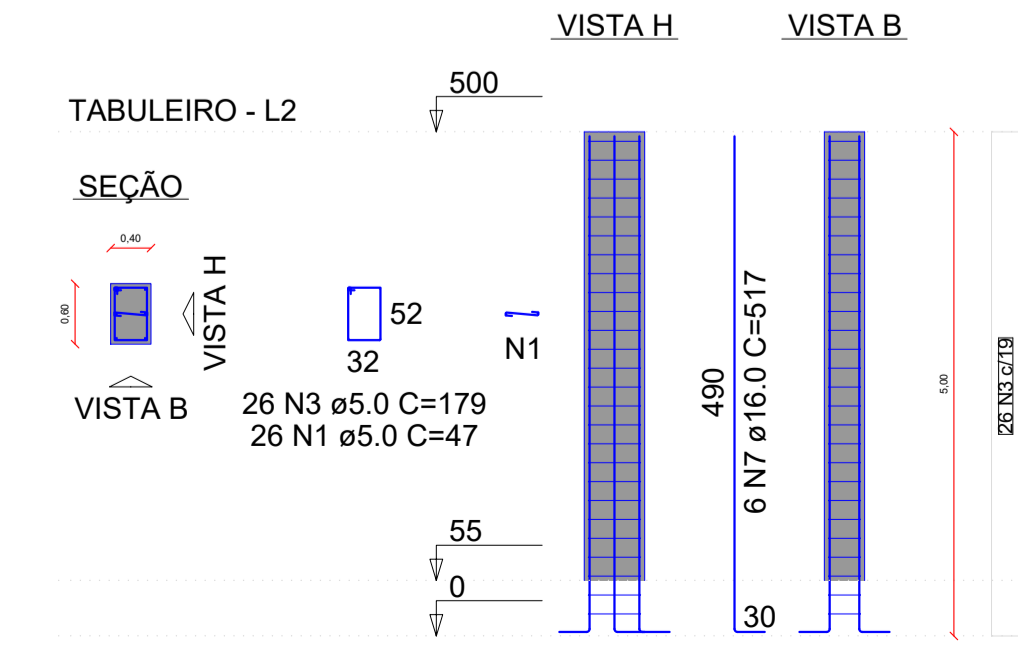
P6=P7



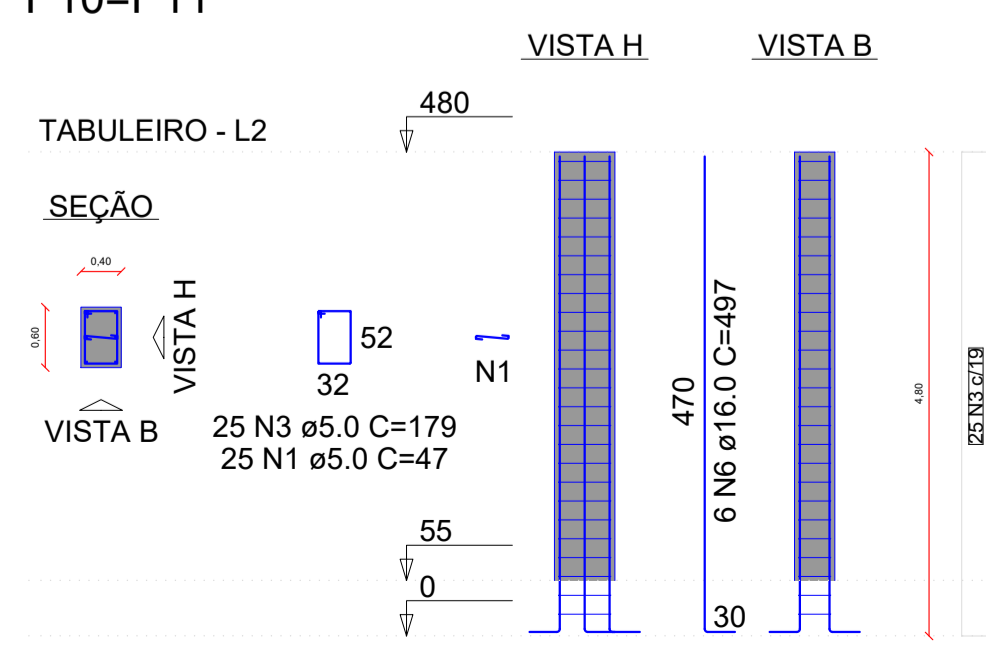
P13=P14=P15=P16



P9=P12



P10=P11



RELAÇÃO DO AÇO

AÇO	N	DIAM (mm)	QUANT	C UNIT (cm)	C TOTAL (cm)
4xP1					
4xP13					
2xP5					
2xP9					
2xP6					
2xP10					
CA60	1	5.0	452	47	21244
	2	5.0	224	159	35616
	3	5.0	228	179	40812
CA50	4	16.0	36	597	21492
	5	16.0	12	617	7404
	6	16.0	36	497	17892
	7	16.0	12	517	6204

RESUMO DO AÇO

AÇO	DIAM (mm)	C TOTAL (m)	PESO (kg)
CA50	16.0	529.92	836.21
CA60	5.0	976.72	150.41
PESO TOTAL			986.62
CA50			836.21
CA60			150.41

Volume de concreto (C-30) = Somado junto com área das paredes
 Área de forma = Somado junto com área das paredes

PREFEITURA MUNICIPAL DE ANTA GORDA / RS
 Projeto Básico para construção da ponte na Estrada Geral Linha Segunda, sobre o Arroio Moquem

Francisco David Frighetto
 Prefeito Municipal

Altos Engenharia e Projetos LTDA
 CNPJ: 42.970.303/0001-87

Des: Luom Domênic	ÁREA: 54,00m²	PROJETO: Paredes; Pilares.	FRANCHA: 03/05
	DATA: 02/2025	LOCALIZAÇÃO: Estrada Linha Segunda, interior, Anta Gorda/RS	