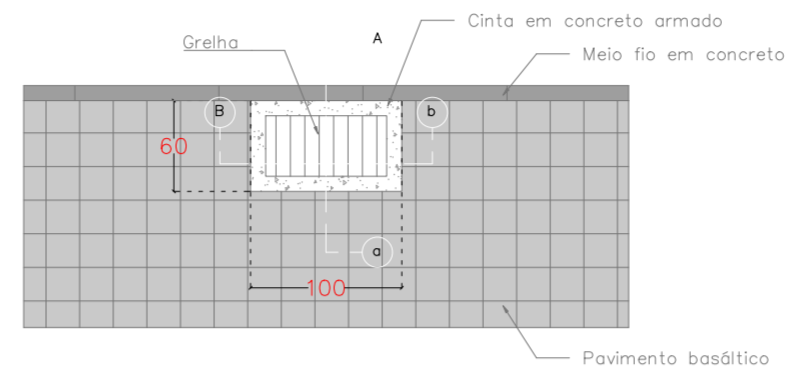
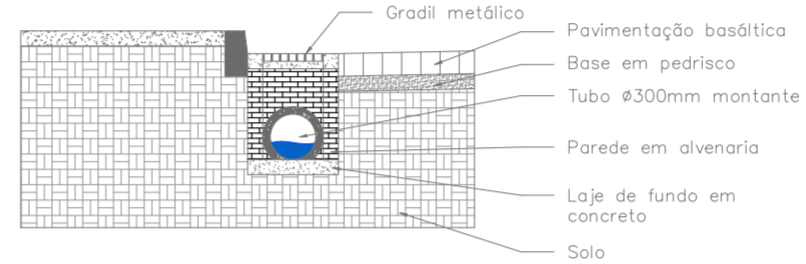


DET. 09 - BOCA DE LOBO COM GRELHA
RETANGULAR, 100x60x60cm
ESC.: 1/25
(3M m)

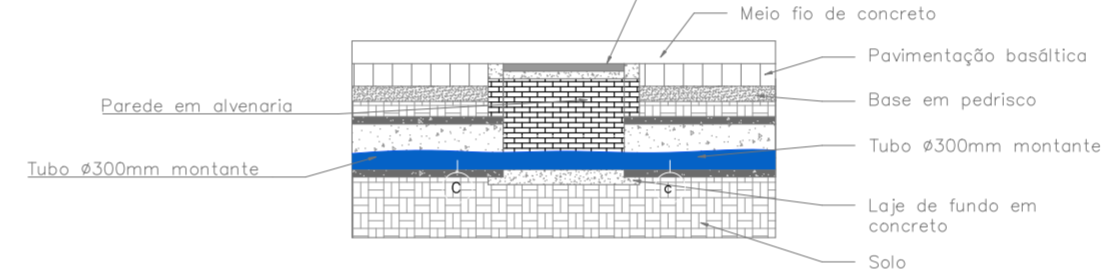
VISTA SUPERIOR



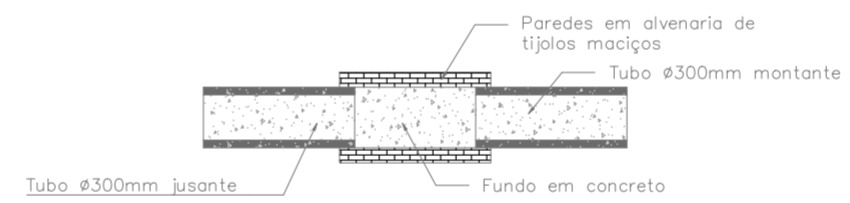
CORTE Aa



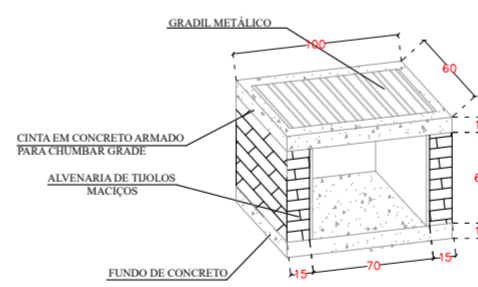
CORTE Bb



CORTE Cc

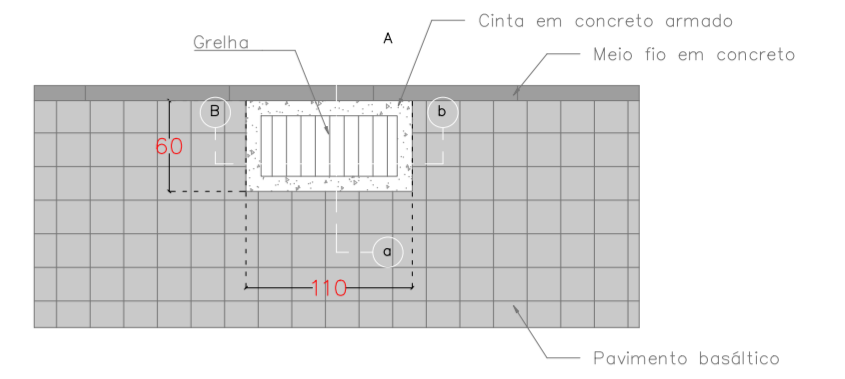


DETALHAMENTO CAIXA

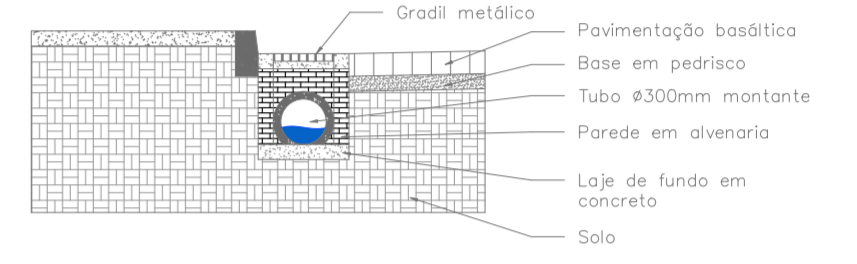


DET. 10 - BOCA DE LOBO COM GRELHA
RETANGULAR, 110x60x50cm
ESC.: 1/25
(3M m)

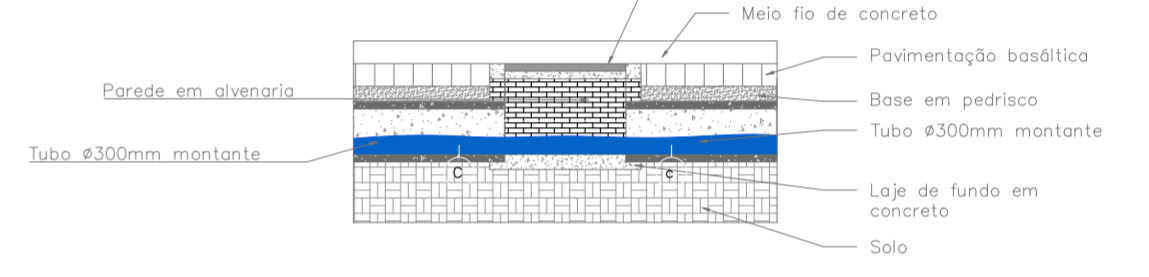
VISTA SUPERIOR



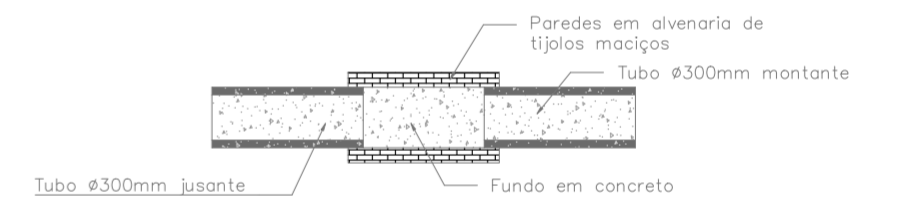
CORTE Aa



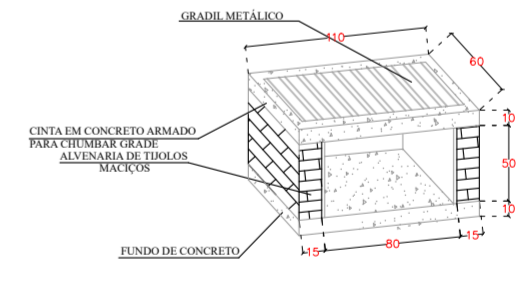
CORTE Bb



CORTE Cc



DETALHAMENTO CAIXA



PLANTA DE DRENAGEM EXISTENTE
ESCALA 1/400

 <p>PREFEITURA MUNICIPAL DE ANTA GORDA / RS Projeto de capeamento asfáltico</p>			
<p>Francisco David Frighetto Prefeito Municipal</p> <p>Altos Engenharia e Projetos LTDA CNPJ: 42.970.303/0001-87</p>			
Des: Luau Domestica	<p>ÁREA: 2.606,92m²</p>	<p>PROJETO: Planta de localização da via a pavimentar; Projeto geométrico.</p>	<p>FRANCHA: 04/04</p>
	<p>DATA: 09/2024</p>	<p>LOCALIZAÇÃO: Rua Dr. Campos, centro, Anta Gorda/RS</p>	