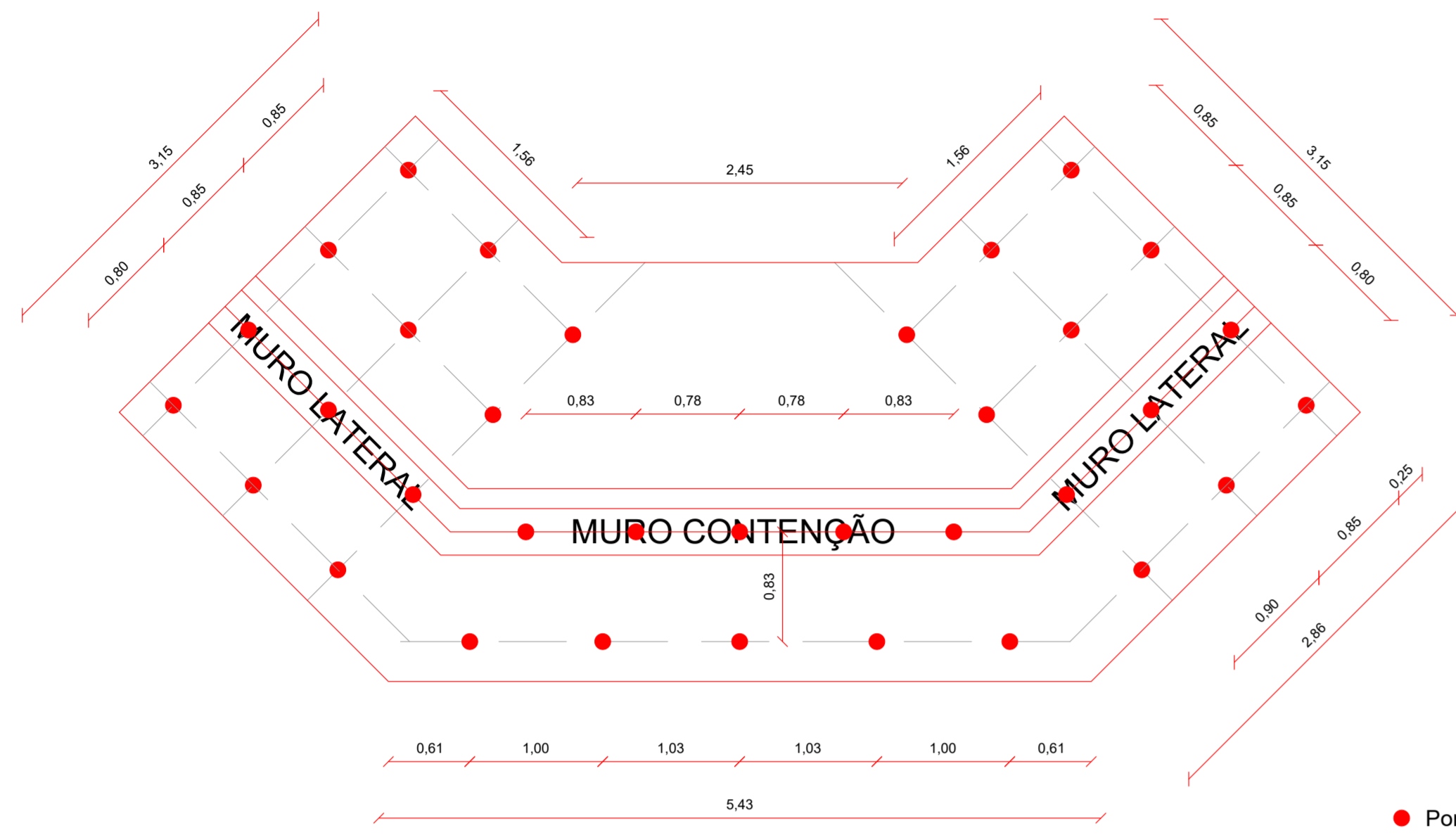
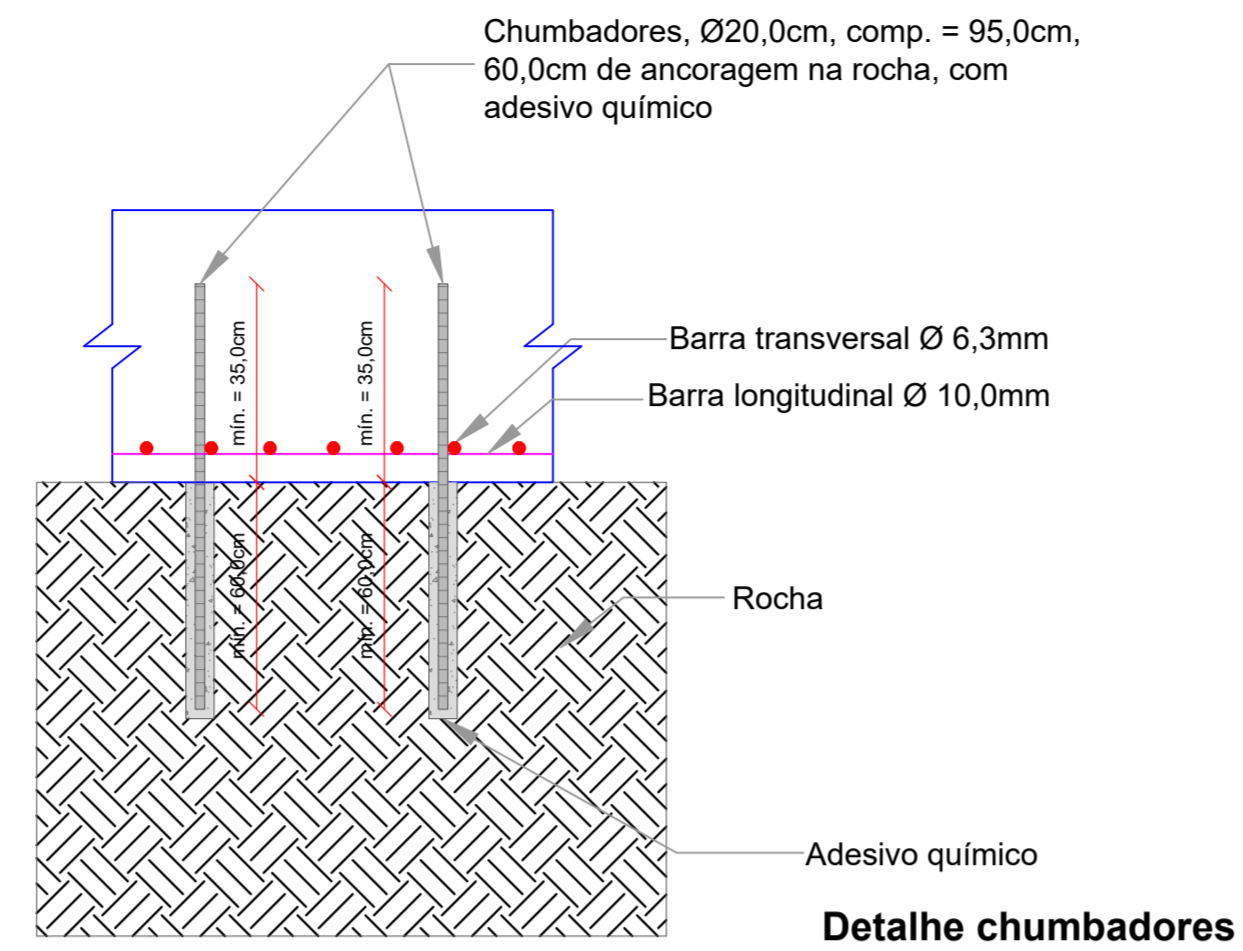


# CONTENÇÕES

## PONTOS DE ANCORAGEM NA ROCHA



● Ponto de ancoragem na rocha (34x2)

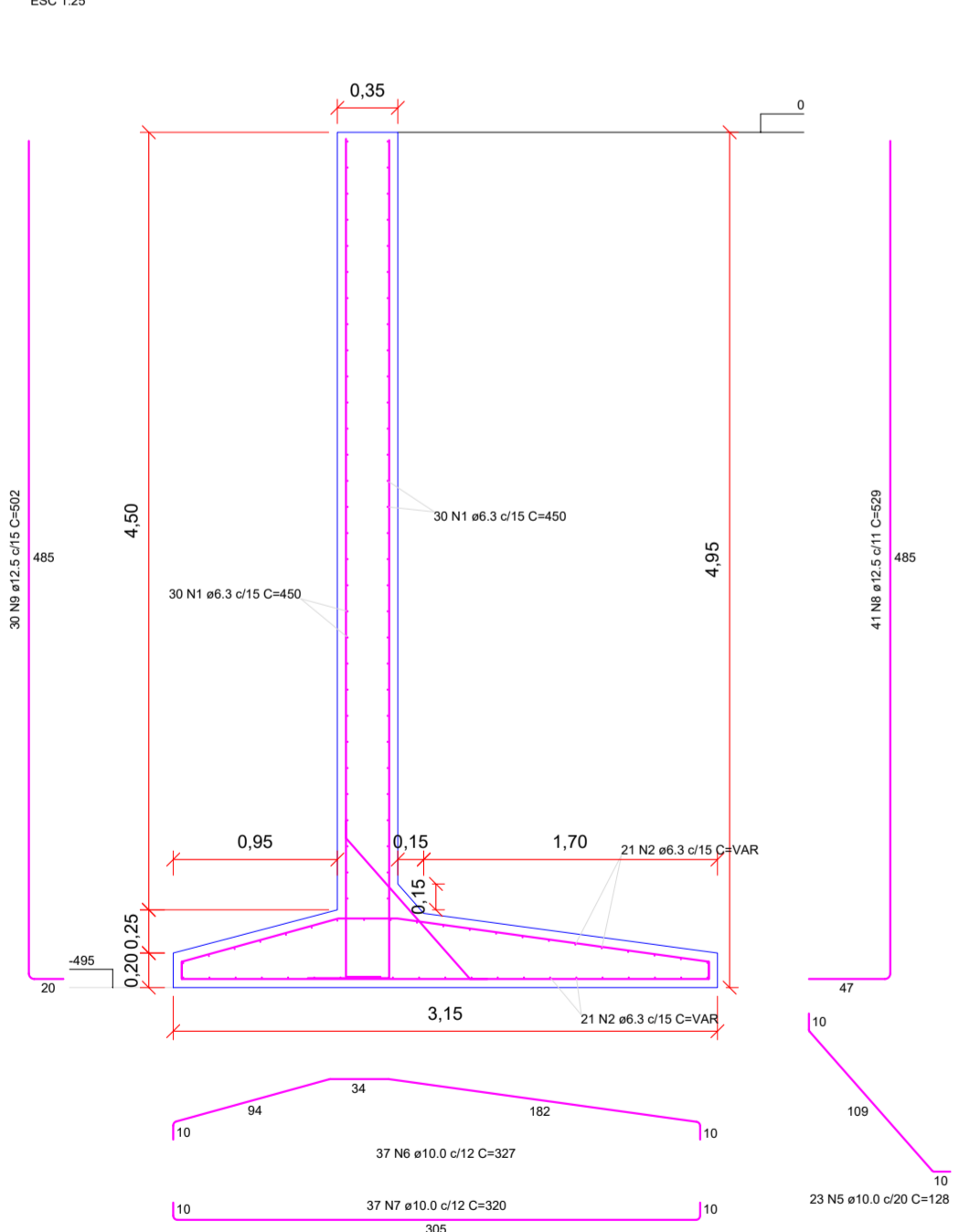


QUANTITATIVO (2X)

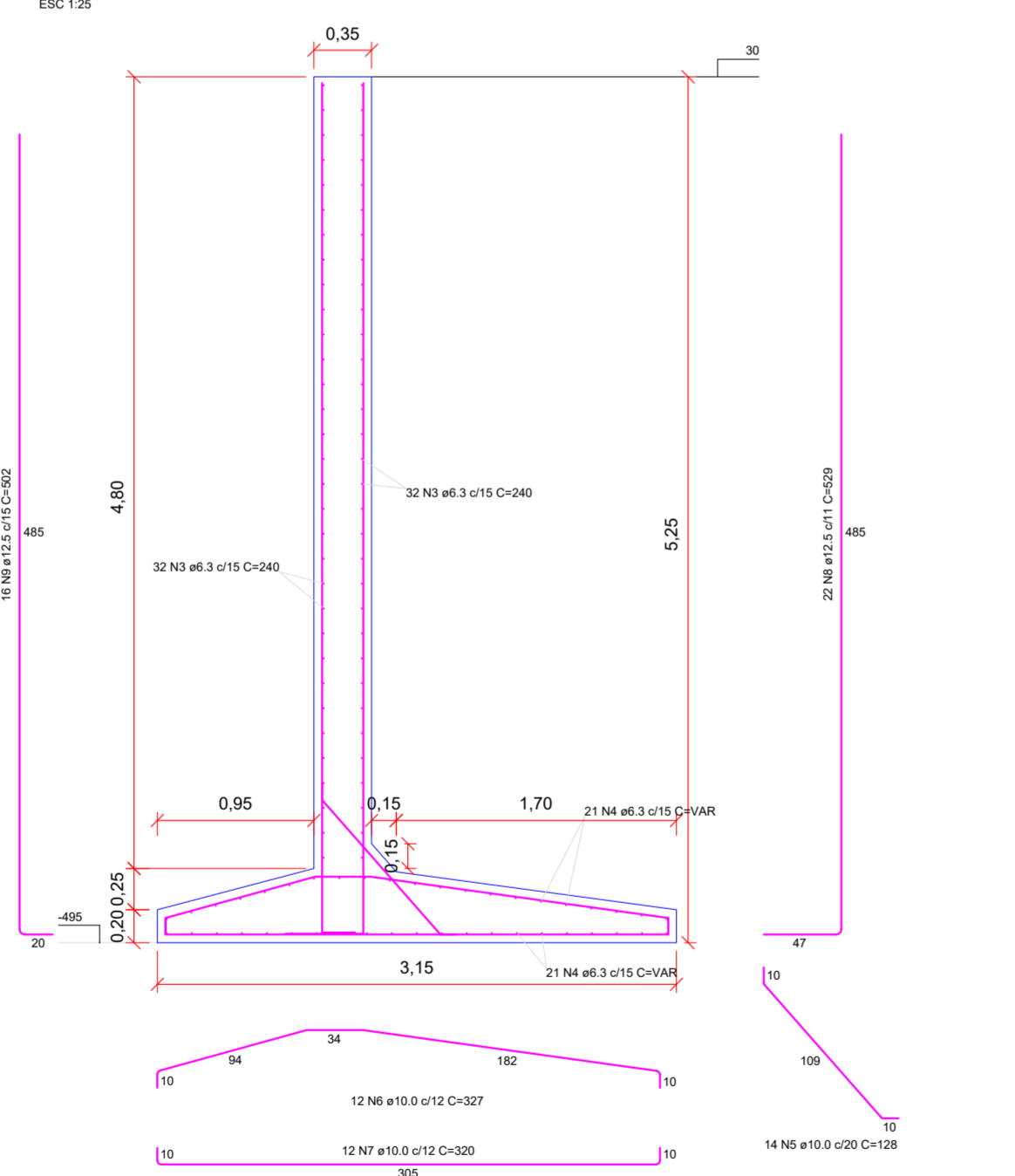
RESUMO DE AÇO				
AÇO	DIAM. (mm)	COMPR. Total (m)	MASSA (kg/m)	PESO Total (kg)
CA50	20,0	64,6	2,466	159,30

## MUROS DE CONTENÇÃO

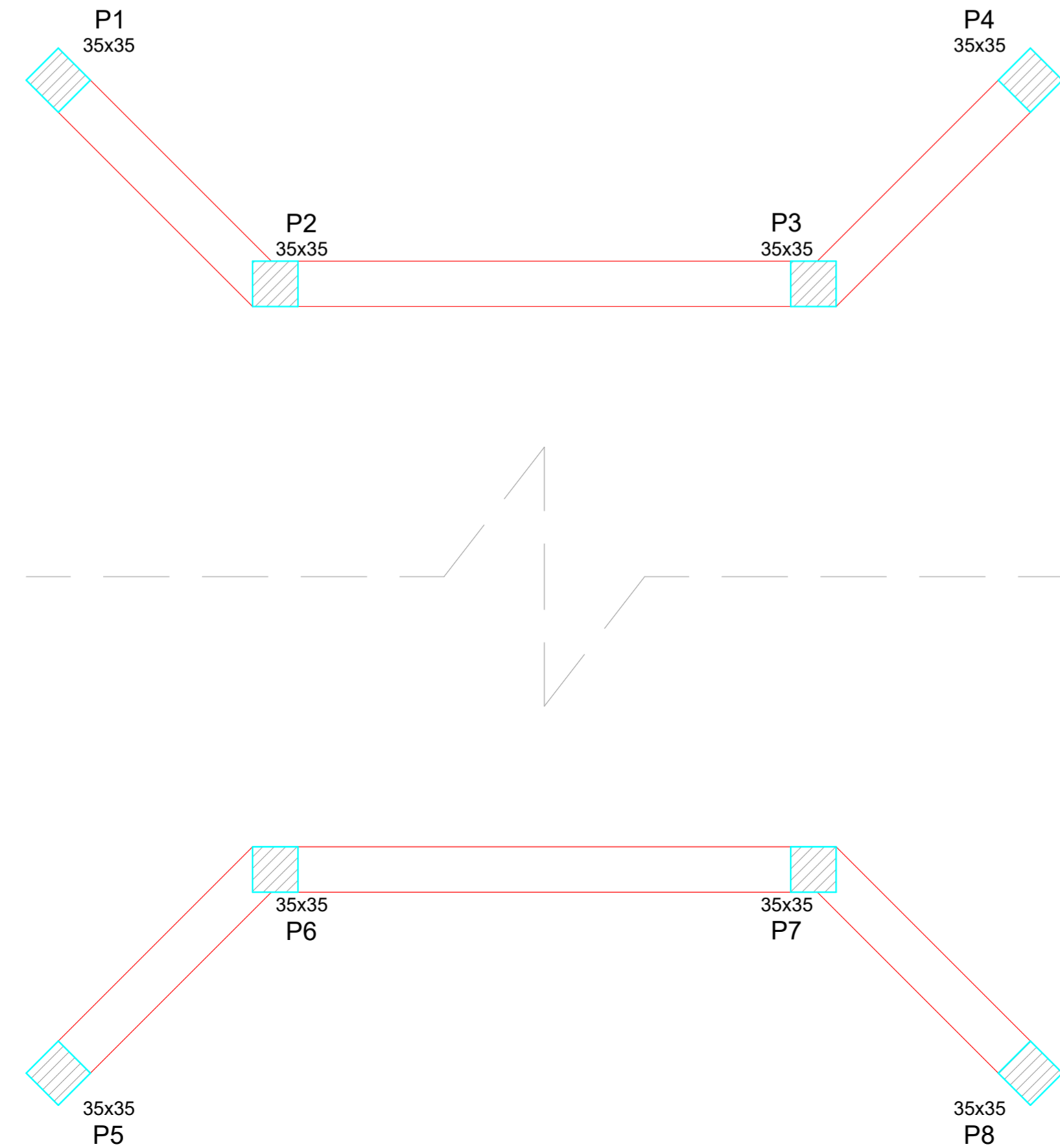
MURO CABECEIRA - FRONTAL (2x)



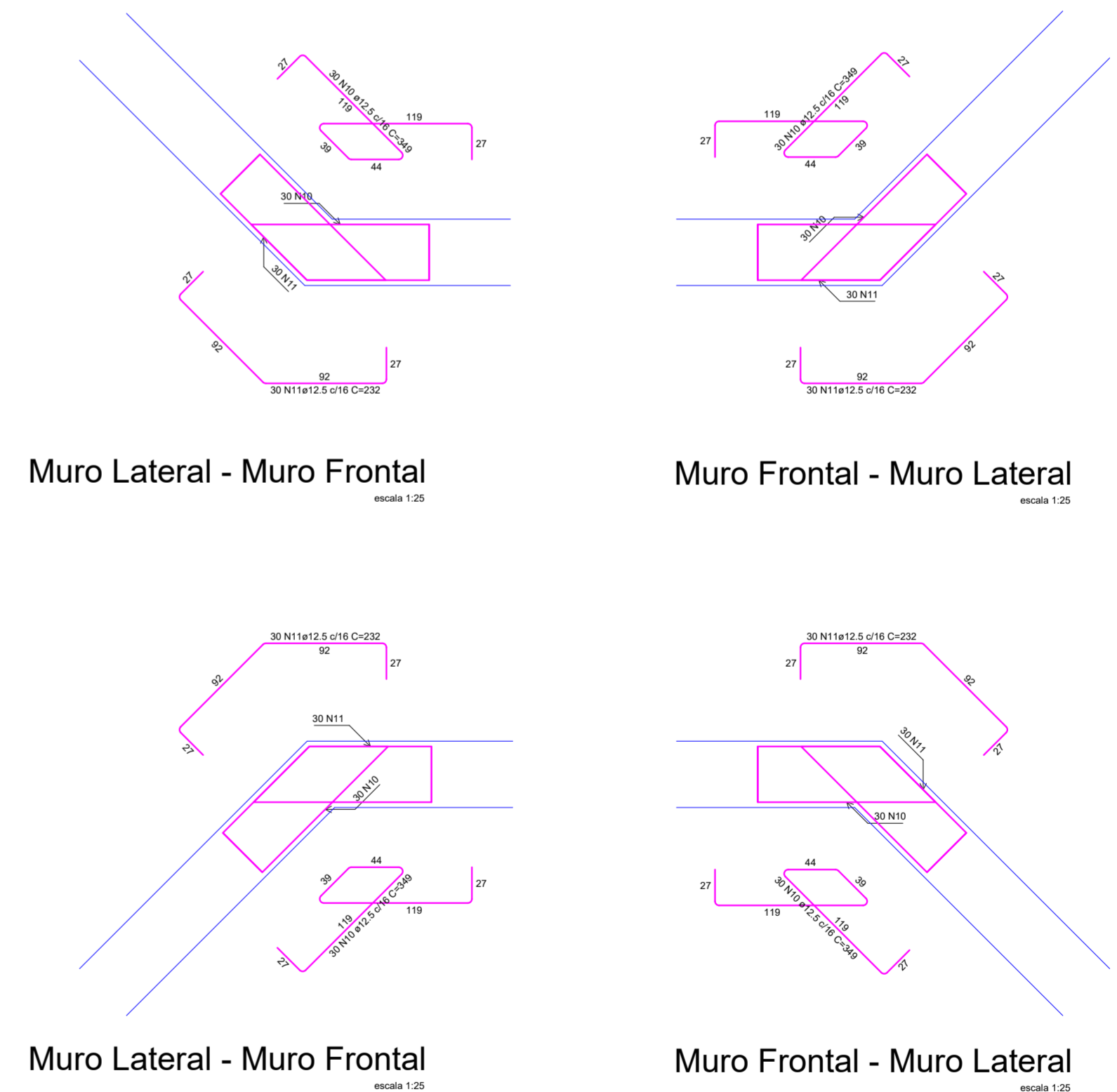
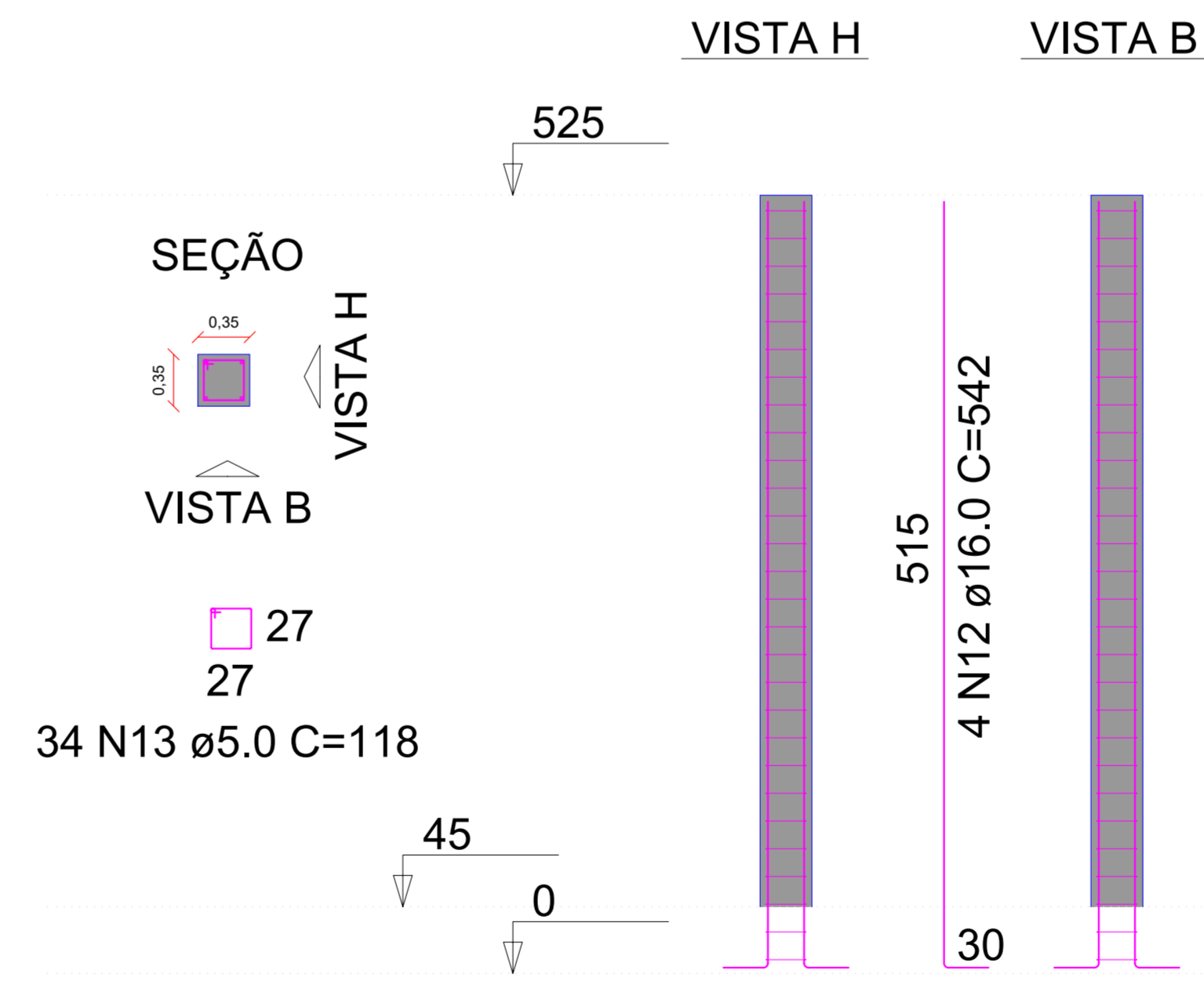
MURO CABECEIRA - LATERAIS (4x)



## PILARES INTERNOS À PAREDE



P1=P2=P3=P4=P5=P6=P7=P8



RELAÇÃO DO AÇO				
CAO	N	DIAM	QUANT	C TOTAL
CAO	1	20	122	2440
CAO	2	6.3	128	811.2
CAO	3	10.0	122	1220
CAO	4	10.0	122	1220
CAO	5	10.0	122	1220
CAO	6	12.5	122	1525
CAO	7	12.5	122	1525
CAO	8	12.5	122	1525
CAO	9	12.5	122	1525
CAO	10	12.5	122	1525
CAO	11	12.5	122	1525
CAO	12	12.5	122	1525
CAO	13	12.5	272	3390

**PREFEITURA MUNICIPAL DE ANTA GORDA / RS**  
Projeto Básico para construção da ponte na Estrada Geral Linha Ferronato, sobre o Arroio Zeferino

---

Francisco David Fighetto  
Prefeito Municipal

Altos Engenharia e Projetos LTDA  
CNPJ: 42.970.303/0001-87

---

ÁREA: 76,50m²	PROJETO: Muros de Contenção;	FRANCHA: 03/07
DATA: 02/2025	LOCALIZAÇÃO: Estrada Linha Ferronato, interior, Anta Gorda/RS	