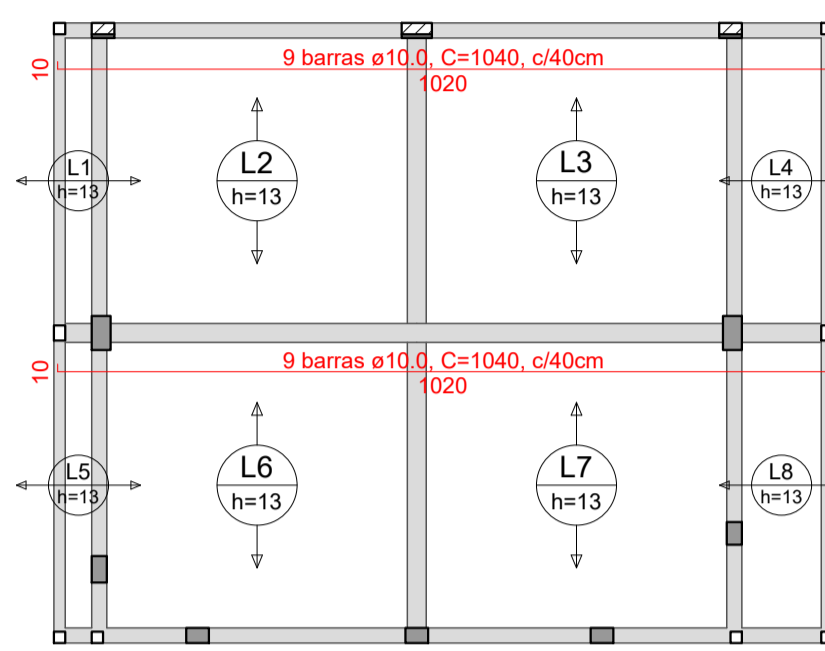
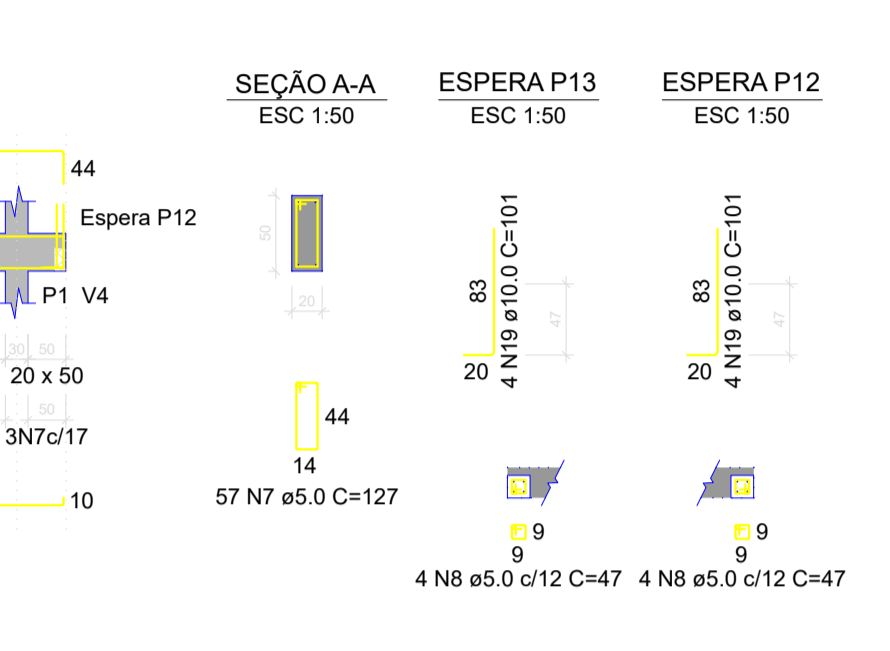
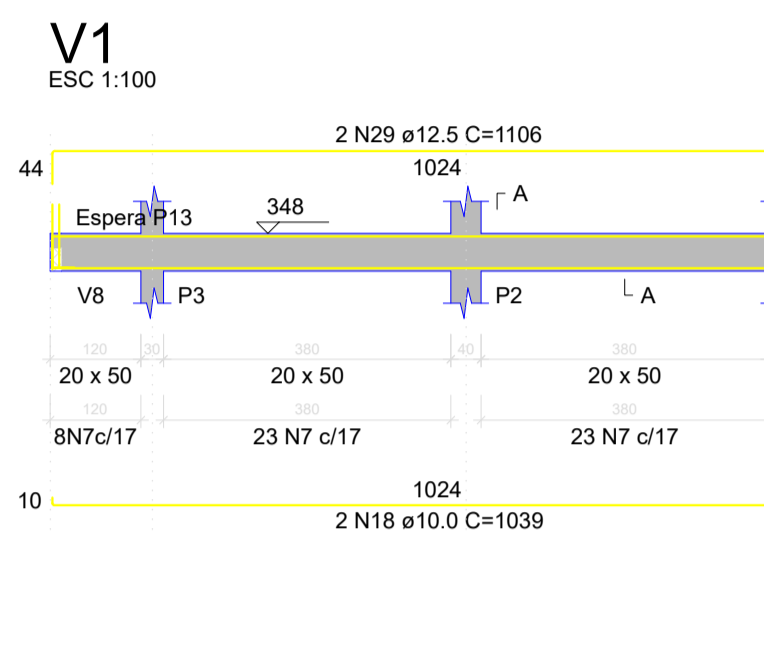
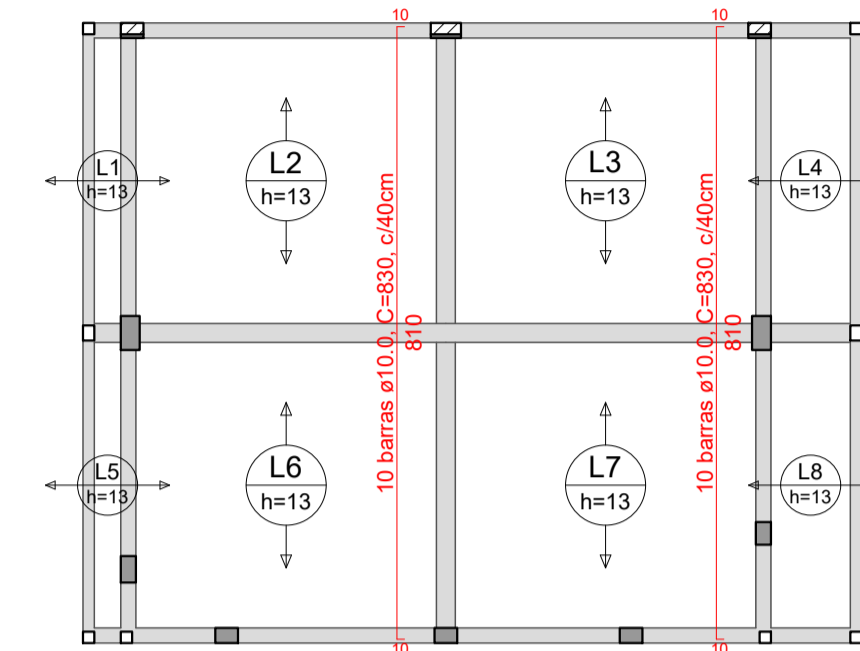


RELAÇÃO DO AÇO

AÇO	N	DIAM (mm)	QUANT	C.UNIT (cm)	C.TOTAL (cm)
CA60	1	5.0	145	87	12615
	2	5.0	48	29	1392
	3	5.0	112	107	11984
	4	5.0	62	34	2108
	5	5.0	52	127	6604
	6	5.0	23	97	2231
	7	5.0	113	127	14351
	8	5.0	24	47	1128
	9	5.0	13	117	1521
	10	5.0	58	167	9686
	11	5.0	8	57	456
	12	5.0	104	77	8008
	13	5.0	56	157	8792
	14	8.0	4	194	776
	15	8.0	4	814	3256
	16	8.0	4	846	3384
	17	8.0	1	170	170
	18	10.0	4	1039	4156
	19	10.0	16	101	1616
	20	10.0	6	854	5124
	21	10.0	16	91	1456
	22	10.0	1	170	170
	23	10.0	4	831	3324
	24	10.0	6	331	1986
	25	10.0	1	220	220
	26	12.5	14	390	5460
	27	12.5	28	335	9380
	28	12.5	14	345	4830
	29	12.5	4	1106	4424
	30	12.5	4	862	3448
	31	12.5	2	884	1768
	32	16.0	2	69	138
	33	16.0	2	867	2601
	34	16.0	2	139	278
	35	16.0	1	265	265
	36	16.0	1	1010	1010
	37	16.0	2	1085	2170
	38	16.0	1	395	395
	39	16.0	2	814	1628



USAR TELA DE AÇO SOLDADA NERVURADA, CA-60, Q-113, (1,80 KG/M2), DIÂMETRO DO FIO = 3,8 MM, ESPAÇAMENTO DA MALHA = 10 X 10 CM, TRANSPASSE MÍNIMO DE 45,0CM

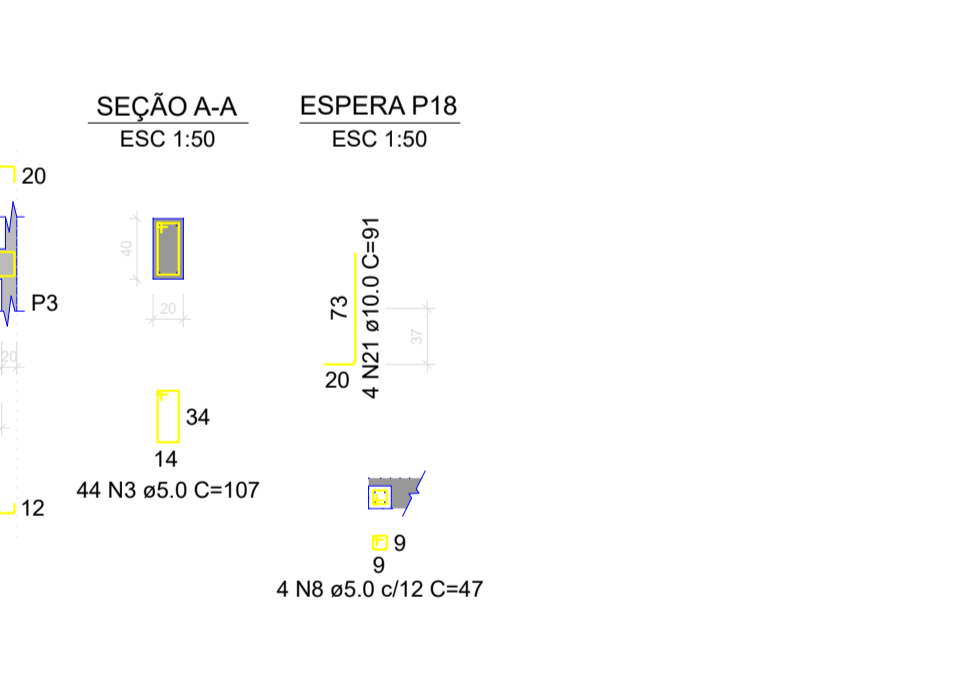
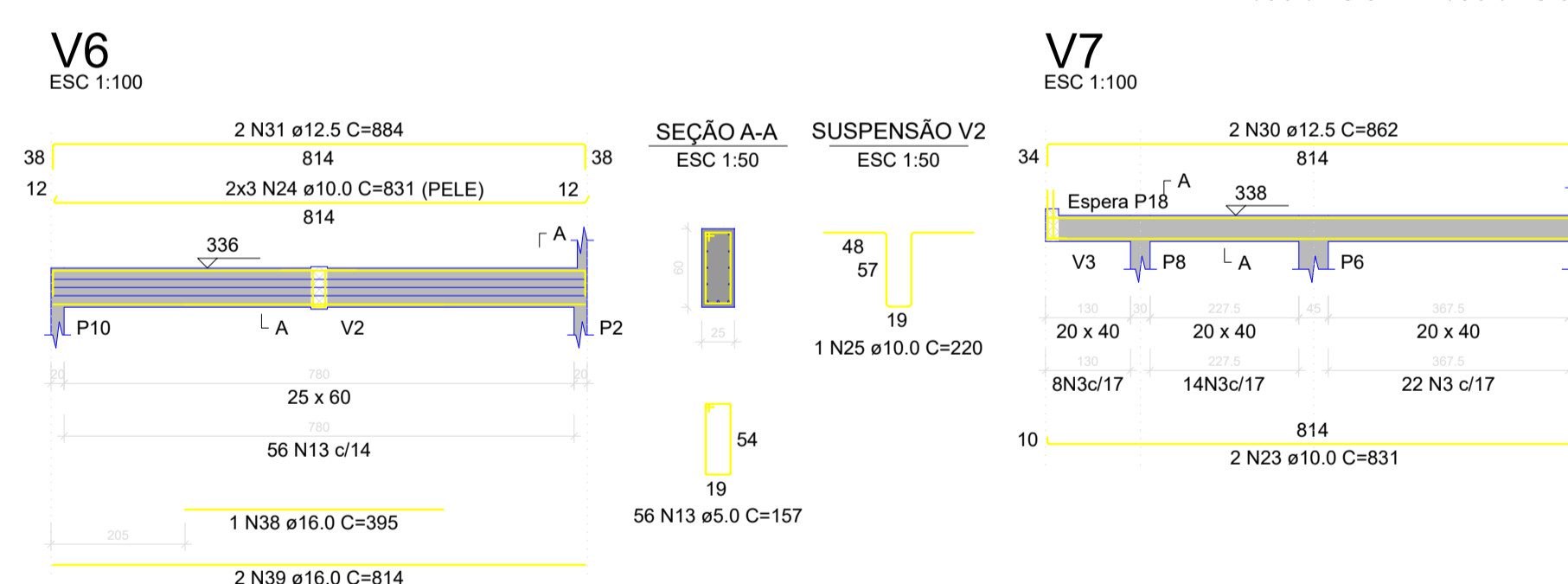
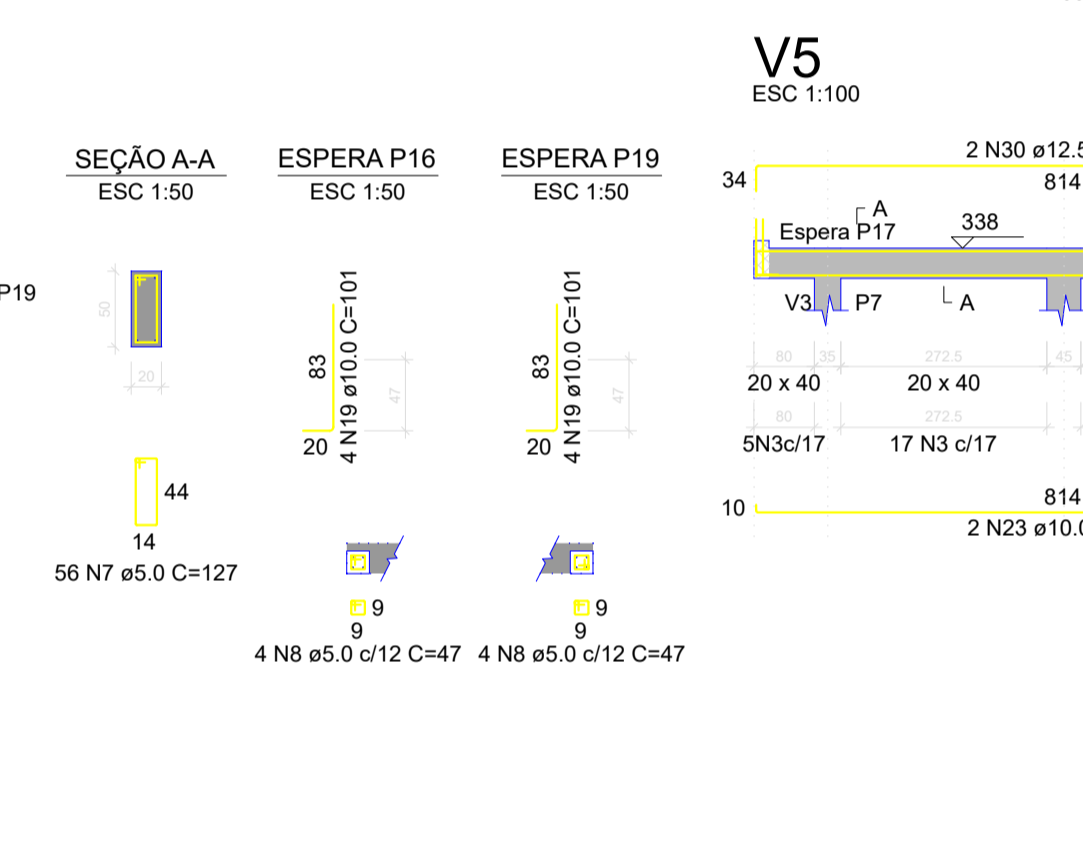
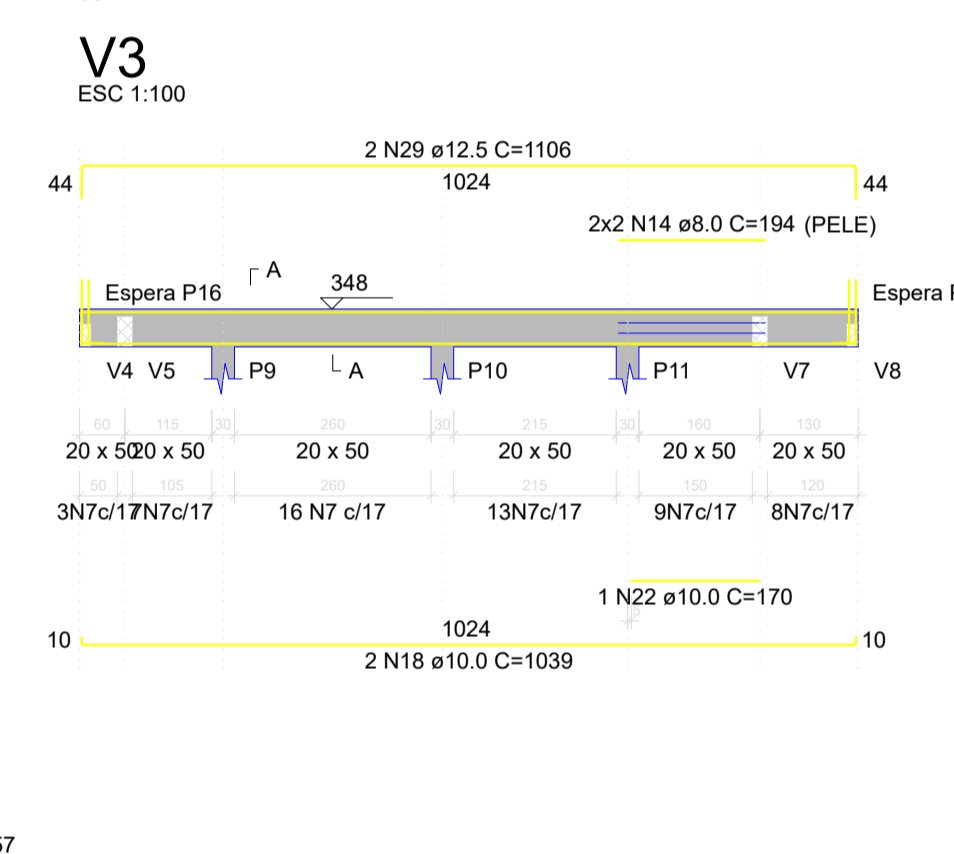
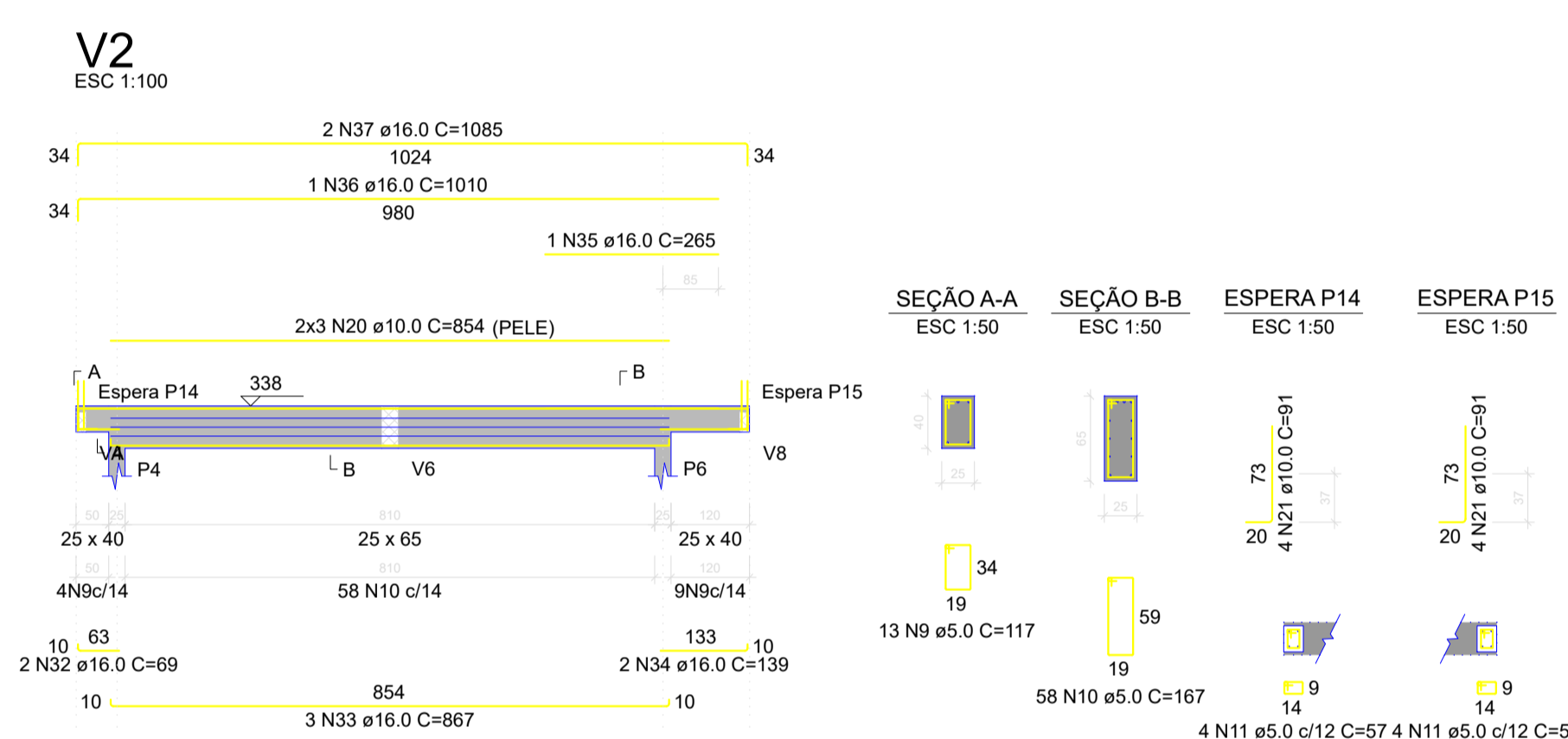


RESUMO DO AÇO

AÇO	DIAM (mm)	C.TOTAL (m)	PESO + 10% (kg)
CA50	8.0	75.9	32.9
	10.0	210.5	142.8
	12.5	293.1	310.6
	16.0	84.9	147.3
CA60	5.0	805.4	136.5

PESO TOTAL (kg)  
 CA50 618.6  
 CA60 136.5  
 Volume de concreto (C-30) = 8.94 m³  
 Área de forma = 100.24 m²

Armação positiva das lajes do pavimento Terreo (Eixo X) Armação positiva das lajes do pavimento Terreo (Eixo Y)





**PREFEITURA MUNICIPAL DE ANTA GORDA / RS**  
 Projeto de ampliação de escola, com construção de 1 sala de aula

---

**Francisco David Frighetto**      **Altos Engenharia e Projetos LTDA**  
 Prefeito Municipal      CNPJ: 42.970.303/0001-87

Disc: Luán Domênico	ÁREA:	70,52m²	PRANCHA:
	PROJETO:	ESTRUTURAL Planta de armaduras Térreo (nível +3,03).	
DATA:	04/2024		LOCALIZAÇÃO:
		Rua Arminho Miotto, nº2286, centro, Anta Gorda/RS	

05